

RICHMOND RANCH



Bull & Female Sale

Friday March 11, 2022 at the Ranch, Rumsey AB



RICHMOND RANCH

25th Annual Bull & Female Sale
1:00 p.m. Friday March 11th
@ The Ranch, Rumsey AB

Sale Day Phones:

Jim's Cell.....403-323-8433
Tiffany's Cell.....403-740-3748
Stephanie's Cell.....403-323-7269
Samantha's Cell403-741-7262
Brandon's Cell.....403-741-2675
Home.....403-368-2103

Auctioneer:

Dan Skeels.403-783-1217

Sales Representatives & Consultants:

Rod McLeod.....403-540-7986
Kirk Goldsmith.....403-575-5654
Andrew Reeleder.....403-848-1260
Martin Bohrson - Bohrson Marketing.....306-220-7901
Jaxon Payne - Bohrson Marketing.....306-830-0456
Mark Shologan - DLMS780-699-5082
Mark Holowaychuck - OBI Livestock Ltd..403-896-4990
Kurt Pederson - OBI Livestock Ltd.....780-209-9999
Roger Peters - OBI Livestock Ltd403-828-9815
Joe Ferris250-558-8745
Dylan Benjamin.....403-741-6852
Gary Rairdan.....403-740-6823

March 4th - March 10th, 2022. 10am-4pm. Daily.

To ensure everyone has an opportunity to tour through the bulls efficiently we have added open houses with coffee and snacks available for the week prior to the sale. If you are looking for some more one-on-one time with us to help select your next herd bull, then be sure to take advantage of this week, March 4th - March 10th.



Videos available to view online @
www.richmond ranch.com
www.dlms.ca www.bohrson.com
www.cattlemanagement.ca

Can't make it to the sale?
Internet Bidding Available.

To view this sale visit www.dlms.ca, Fill out the registration form located under registration and sign-up for your free user account and select a username and password.

BIDDERS - To be approved as a bidder, Log in to dlms.ca and click BUYER APPROVAL tab, select the sale you are interested in bidding at and click sign up.

For more information
Call DLMS Reps:
Mark Shologan - 780-699-5082 or
DLMS Purebred Team 780.991-3025

DLMS
www.dlms.ca

Longevity ~ Quality ~ Integrity

**RICHMOND
RANCH**



I find myself inspired by the perseverance of those in our agricultural industry and look to the future with great optimism. Ranchers and farmers face adversities every day. It is as some would say, just a part of the life. I could say 'job', but as any rancher and farmer know; this is not just a job to us. It is more than just our day to day; it is our livelihoods, our way of life, and one that we do with immense pride day in and day out because let's face it... It's one hell of a life. My great-grandfather used to say, "If you grab a cow by the tail, she'll pull you through anything." It is a saying I have grown to live by and today seems no different. One thing above all else remains true, ... people must eat. Ranchers and farmers are that resource; that entity that will forever provide a quality of product that cannot be matched. Beef!

As we approach this bull sale season it is a touching sentiment for our family as we embark on our 25th anniversary sale. It is with your support that our program has reached this remarkable milestone. We would like to thank our customers, friends, neighbours, and family for their loyal support, and the confidence placed in our breeding program. We are extremely humbled and could not be more proud to see our prefix flourish in herds across Canada. We are thankful for the opportunities we have had to work with many progressive commercial cattle operations over the years. The cattle business has been our passion and way of life for six generations now. Being a family run operation, we take considerable pride in our cattle and every year we set the bar to breed the type of cattle that will be sustainable in the beef industry, while focusing on the productivity and profitability for the cattlemen who sell quality pounds for a living. Here at Richmond Ranch, it has been our unwavering belief in the strength of cow families and have emphasized on having elite females retained in the herd. Our disciplined breeding program has focused on structure, soundness, udder quality, performance, and maternal production. You can be certain that behind this set of stout bulls is a very impressive, hardworking, and productive set of females.

We have always stood behind our cattle and backed our bullpen satisfaction fully guaranteed. We will continue with our Breeding Protection Plan to help ensure your investment is protected and, furthermore, your cows are bred. This year we are immensely proud of our offerings and feel even more privileged to be your herd bull source. We hope that you will mark your calendars and join us Sale Day where you will find, Black Angus, Red Angus, & Limousin. Within the three breeds, there will be a variety of bulls with a selection of traits including calving ease, growth and performance that will add to your weaning weights in the fall. Feel confident in the purchase of a Richmond bull to leave great maternal features you will want to pass on to your replacement females. We make our living by selling bulls, so it is always such a compliment when year after year we have so many repeat customers. Our commitment and highest priority is the satisfaction and success of our customers. Understanding the importance of your investment in a herd bull along with the expectations that come with that, we would like to assist you in any way that we can to make your selection easier. We believe that quality should not be just a goal, but a standard. Richmond Ranch; based on longevity, quality, and integrity. From our family to yours we hope to see you all once again on sale day.

Sincerely,
The Richmond Family

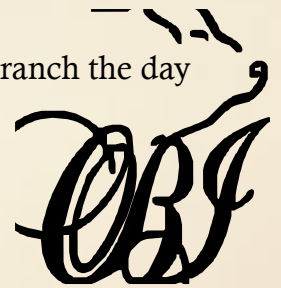


Welcome to the 25th Annual Richmond Ranch Bull & Female Sale at the farm at Rumsey, AB. OBI Livestock Ltd. is very pleased to once again to be working with the Richmond Family.

I first want to congratulate the entire Richmond Family for this huge achievement. The work and patience that goes into establishing a cow herd like theirs is remarkable. They are leaders in the industry with the consistency of developing purebred and commercial bulls for Canada. The entire family have continued to work well together discussing decisions with all for the improvement of the ranch operation. This is a testament to the cattle operation while continuedly seeking to find the next herdsire that will keep Richmond Ranch as a leader in the seedstock business. Commitment is a word I use with the operation and believing in the cow herd and what they can do.

When touring this January at the ranch, the offering is so very consistent with the incredibly solid Limousin 2-Year-Old Bulls and then the Limousin Yearling bulls; a set that has many options for the purebred herd. The Ranch did go out and do some showing this fall with these yearlings and they held their own on the show road. The Angus offering this year is so consistent with deep, thick, solid red meat bulls that are extremely uniform and impressive.

OBI Livestock Ltd. are very familiar with the sale offering and we will be at the ranch the day before and of the sale, so please do not hesitate to call.



Mark Holowaychuk, OBI Livestock Ltd.

Welcome to the 25th Richmond Ranch Bull & Female Sale. As you tour through the 2022 sale offering, a producer needs to stop and take time to appraise and really appreciate the amount of volume, muscling and structural correctness that “all” three breeds have to offer.

When we talk about marking a milestone sale, one must reflect how did we get here? My first recollection of young Jim was at many Limo sales. Always selecting cattle that were easy doing, efficient, with a high degree of quality. The Richmond Ranch tradition started years ago with a select commercial cow-calf program and has developed today into a multi breed family operation with a rich history.

Not only does Richmond Ranch host one of the most successful spring sales, but they consign to a number of other events throughout the entire year and support and attend cattle sales nationwide. The Richmond-Nemetz crew travel lots of miles and stop at more purebred operations than most – searching for their next “herd bull”. They are fully committed to make the SS brand even more successful.

Join us on Friday, March 11 at Rumsey for the milestone “25th Sale”. The Richmond’s are dedicated to customer service and your satisfaction. Bohrson Marketing is pleased to be involved in their event and can assist with your selection(s) in a professional manner. Jaxon Payne, and I would love to appraise the bulls and females with you and can assure you of the Richmond “high quality” genetics.

Matrin Bohrson



First off congratulations to the Richmond Family on their 25th anniversary sale. This is a huge milestone, and I know there have been no short cuts taken to get here. This is a truly family run operation, and regardless of who it is you talk to in the family about their program, you are going to receive knowledge, and straight goods. For the past 22 years I have watched this program evolve, and I can honestly say in my opinion this is one of the elite seedstock operations out there. Their vision, passion and dedication for the industry is unwavering, and their commitment to providing the best possible product regardless of breed is unmatched. When it comes to herd bull selection, no expenses have been spared to source the best, which they feel will help elevate their own breeding program to the next level, to help you their valued customers add value to your programs as well. Not to be overlooked is the strength of this cowherd. Attention to detail has always been of the utmost importance. When you study the catalogue, you will be sure to notice cow families and the strength and merit in the value of a good cow. I truly appreciate how in tuned they are with the commercial sector and realize what is important to the beef industry.

This years' bull pen will offer as much diversity as ever, with one common thing. Sound functional bulls that carry the stamp of quality "SS". From calving ease, to performance, or a true blend they will have all the bases covered, and in doing so in either the Limousin section or Angus section. Jim and I have talked about this a few times this year, and we agree the bulls you purchase this year, have the capability of siring perhaps the highest priced calves you've ever marketed. I cannot express enough the importance of selecting the right bull for your herd. I always equate it to just like seeding a crop. If you seed it, you should fertilize, and spray for weeds or pests. Same thing with your cow herd, by selecting the right bull you set yourself up to harvest a bigger crop, it truly is that simple.

I encourage you to stop in and look at the bulls prior to the sale and discuss your needs with anyone in the family. If you are unable to attend this years' sale, please don't hesitate to contact any of the sales staff to have you represented in the most professional manner.

Sincerely,
Dan Skeels

Give us a call and stop in anytime! The bulls can be set up and on display for your viewing convenience anytime prior to sale day.

Friday March 11th

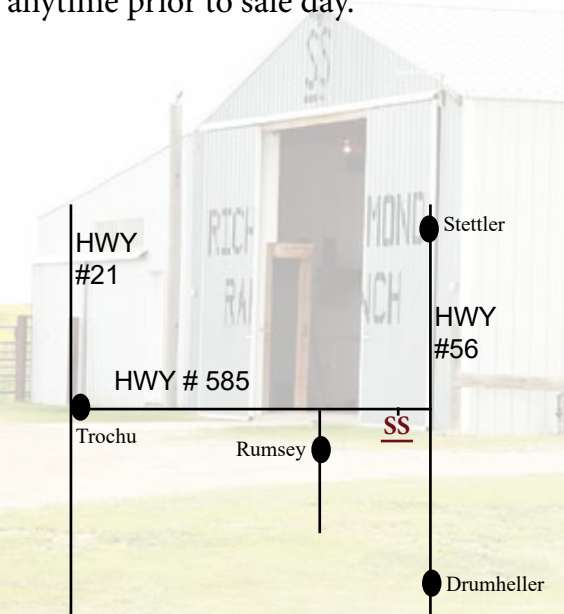
1:00 pm Richmond Ranch Bull & Female Sale

Sale Location: The sale will be held at the Ranch, 5 miles East of Rumsey, AB. In the new shop south of the pens.

Directions from Stettler: go South on HWY 56 about 60kms. Turn West onto HWY 585, go 1 mile and the farm is on the South side of the road on RgRd 202.

Directions from Trochu: go East on HWY 585 about 40kms. The farm is on the South side of the HWY on RgRd 202.

Directions from Drumheller: go North on HWY 56 about 60kms. Turn West onto HWY 585, go 1 mile and the farm is on the South side of the road on RgRd 202.



Stop in for a visit and tour of the bull pen anytime!



Our commitment and highest priority is the satisfaction and success of our customers. Understanding the importance of your investment in a herd bull along with the expectations that come with that, it is an honor and a privilege to serve as your herd bull source.

We will be offering our Breeding Protection Plan once again. Our goal is to help ensure your cows get bred and your investment is protected. We know that no matter how many precautions we take, bulls will be bulls, and injury or death is always a possibility. We still encourage that the best defense you can buy is a backup bull. One that you have selected, that stands ready in your yard. However, we understand this is not always an option for everyone and have designed our Breeding Protection Plan to better serve our valued customers.

With an additional 10% on the purchase price of your new bull: The Breeding Protection Plan will give you 1 year protection against injury or death with either a replacement bull, a credit for a future bull sale, or a combination of the two. If you should have any problem with your bull – Make Richmond Ranch your first call. Jim or Stephanie at 403-323-8433 or 403-368-2103.

Richmond Ranch will do our best to resolve any issue with honesty and integrity to keep you a satisfied and repeat customer. That is our uncompromising commitment. Under our Breeding Protection Plan your bull is protected from injury, sickness, accident, structural breakdown, or death. The Breeding Protection Plan will not protect from any injury or death due to malicious, willful intentional acts of mistreatment. Richmond Ranch retains the right to request photos.

Richmond Ranch retains the right to request a vet report or Postmortem.

Please feel free to give us a call anytime to discuss this Breeding Protection Plan.

EPD's are available upon request. They can be found on each respective breed association website.



Homozygous or Hertero Polled	
PV-Parent Varified or SV-Sire Varified	
BW	Birth Weight
CR	Calving Rating
DOC	Docity Rating
Age of Dam at the time of calving	
Adjusted Weaning Weight @ 205 days old	
Jan 15 Weight	
GOG	Gain on Grass over 147 days
ADG	Average Daily Gain in pen 140 days



STOCKMENS INSURANCE

Larry Toner
 Phone (306)932-4866
 Cell (306)834-7652
 Email: larrytoner@xplornet.com



Producing Cattle that GAIN on GRASS.

The 2022 bull pen gained over 3 lbs. on grass

We are very proud of this offering. The purebred cattle here at Richmond Ranch are raised ranch style and calved out the way you calve, so the cattle will excel in ranch conditions. The do it themselves ranch cows stay out on native grass until late fall when the calves are weaned off. The calves are wintered in a 20-acre pen on a combination of quality forages ensiled to get them through the winter and back on Grass. This program is designed to develop cattle for longevity and success in any program. We have always selected cattle that thrive on grass, selecting powerful herd sires that stick to the basics of beef, thick and naturally fleshing. This past April 19th we took a weight on our sale bulls just before we sent them to grass (There was a bit of silage fed on the pasture until Grass started to grow) we brought them back home on Sept 13th for a weight off pasture. They went back to the pasture but were supplemented as grass was becoming dormant. The Bulls came back to the yard Nov 17 for the winter to get ready for the sale.

We calculated the Gain on Grass from the April 19th weight and the Sept 13th weight. Over the 147 days the whole pen averaged 3.18 lbs. per day – (The Cheapest gain we can get!)

We have entered this data on each sale lot under “GOG” Gain on Grass.

We also calculated their Average Daily Gain from Sept 13 to their Jan 15th Weight.

Over the 140 days the whole pen averaged 3.46 lbs. /day

We have entered this data on each lot under “ADG” Average Daily Gain.

When pounds and profits matter, choose your next herd bull from quality genetics.



Cattle Nutrition: At Richmond Ranch our goal is to develop the cattle for longevity and success in any program. The bulls are fed a growing ration of corn and barley silage, chopped hay/straw, and a Bullseye supplement at 0.75%. This system allows us to grow the bulls to seek the performance while maintaining their natural muscle shape. Our goal is to not only have bulls looking good for sale day, but most importantly, looking great while working in your pasture during breeding.



There is always lots of excitement out at Richmond Ranches as they prepare for the 2022 bull sale. This year, forage volumes were down with the hot, dry conditions while quality remained high. Some good quality forage opportunities were sourced to help ensure the bulls are developed using as much on farm feeds as possible. We have worked closely with their program and developed balanced diets that start with high-quality on-farm ingredients.

The cow herd utilizes a customized mineral program that is balanced throughout the year. This supports proper bull calf development from a young age. The bull feeding program is built to maximize forage utilization and gut health; they are developed on grass with their moms and then moved onto a balanced TMR that promotes lean muscle. The bulls are challenged with a foraged-based TMR to help them develop to their genetic potential. Organic minerals are used to ensure proper immune function and overall health.

This program uses a total nutrition program on their entire operation, ensuring optimal cattle performance. If you have any questions about the nutrition of the sale bulls, please feel free to call. Best of luck on sale day!

Doug Roxburgh
Beef Consultant

(403) 392-4541

doug.roxburgh@bullseyefeeds.ca



© More Than Just Feed

Vaccination Programs: All our livestock are on the Express Verified Program as well as given a combination of Safe Guard, Clean-up 2 and Ivomec for parasite control. The calves are vaccinated and bolstered with Pyramid FP5 and Presponse SQ and Fermicon 7/Somnugen.

Breeding Females: In addition to the above, our females receive an annual shot of Express FP 5 VL5 prior to breeding. The bred heifers also get vaccinated and bolstered with Scour Bos.

Semen Testing: All bulls have been tested, measured and palpated through the Stettler Veterinary Clinic by Veterinarian Dr. Jackie Dobinson.

If you're reading this, you are likely considering this great offering of bulls and females and everything that they will bring to your herd. Quality herd sires offer the fastest way to impact genetic potential in your herd. From a veterinary perspective, we often encourage producers to know the health of the animal they are bringing in to ensure that it's going to be a good fit. Richmonds due diligence is spot on. The vaccination and health program at Richmond Ranch is the gold standard of veterinary recommendations. From a reproduction standpoint, everything in this sale is reproductively sound with a veterinary breeding soundness examination and their own responsible breeder guarantee. Health is directly linked to production and production is directly linked to dollars. Years of experience here and sound practices make up the quality you'll see flipping through these pages. We are proud to work with Richmond Ranch and congratulate them on another great offering!

Sincerely,

Jackie Dobinson, DVM

Stettler Veterinary Clinic PH (403)742-3338

LIMOUSIN DIVISION

Offering Elite Limousin Genetics





Are you looking for calving ease? Check out our calving scores on each bull!

Calving Rating or CR: We have taken into consideration our knowledge on the cow families, calving histories, birth weight, and phenotypical shape as a baby calf to help you better select a herd bull based on your calving needs. These numbers are not calculated; they are an estimate based on how we ourselves would use the bull if we were breeding our own cows. *All Bulls are guaranteed to calve easy on cows*

3 = Could be safely used on heifers.

2 = May be used on heifers with a family history of calving ease. Could be used safely on all cows.

1 = Can be used safely on all cows.





Richmond Ranch Guarantee: We stand behind our cattle 100%

Richmond Docility Rating or DOC: This docility rating has been established to help you determine the temperament and manageability of the bulls. We as breeders strive to hold our livestock to a high standard and that includes docility. In our program, we do not tolerate any problem animals and feel you should not either. No one knows these cattle better than us and throughout the calendar year these bulls have been sorted, processed, handled numerous times and are strictly culled to remove any behavioural problems. Below is an index defining the different categories we have decided upon. These are simply our ratings and cannot be compared to other breeders or numbering systems. Please feel free to contact us about any questions you may have.

1 = Pets – These cattle are exactly that; pets. They can be scratched in the pen and handled at all times.

2 = Calm – These cattle are very quiet, easy to handle when isolated. They do not frighten when you are working them but you cannot get close enough in the pen to scratch them.

3 = Average – These cattle are calm in the group, you can walk through them without disruption. When sorting these cattle, they are easy to stop and hold but can get uneasy and impatient when worked alone.

4 = Slightly Restless – these cattle are the ones at the back of the group in the pen; they do not disrupt the rest of the pen; they are manageable in a group but become agitated and nervous when isolated or worked alone.

5 = Nervous – these cattle are constantly moving away from you in the pen, can disrupt the group, and needs to be managed with a buddy. These cattle are hard to stop when sorting and become easily agitated if alone.

6 = Heads Up – these cattle have a big flight zone, they will be the first to run away, should be handled with a buddy, cannot be stopped or isolated. When sorting in an alley, these cattle will run past sideways or snort at you. These cattle can become aggressive when agitated. These cattle are most commonly culled from our herd.

7 = Hunters – these cattle cannot be trusted at all, even in a group they will become aggressive and cannot be handled. These animals are culled immediately.



SRD 29Z

Richmond Zodiac

Jan 30/2012 94% CPM0210496

RS

Homo Polled	
BW	75
TM	41
Mature Wt	2750
AWW 205 Wt	715
# of Progeny	243
Avg BW	84
Avg AWW 205	636

Richmond Sir. J.R SRD 128S
Richmond Wyatt SRD 48W
 Top Meadow 303N
 RPY Paynes Marathon 47U
Richmond Xotic SRD 6X
 RPY Perfect Storm 10R



SRD 8D

Richmond Grand Duke

Jan 12/2016 94% CPM4083579

RS

Homo Polled	
BW	100
TM	45
Mature Wt	2750
AWW 205 Wt	782
# of Progeny	139
Avg BW	87
Avg AWW 205	637

Nordal Trendsetter
Richmond X-Celler SRD 137X
 Richmond SRD 181T
 WULFS Waldo T928W
Richmond Zeta-Jones SRD 10Z
 RPY Perfect Storm 10R



Richmond Ferdinand

Apr 14/2018 95% CPM4096025

Homo Polled	
BW	80
TM	40
Mature Wt	
2500	
AWW 205 Wt	
637	
# of Progeny	
13	
Avg BW	
89	
Avg AWW 205	
667	

RS

Richmond X-Celler SRD 137X
Richmond Grand Duke SRD 8D
 Richmond Zeta-Jones SRD 10Z

Richmond SIR J.R SRD 128S
Richmond Whimsical SRD 204W
 CL Pennie

SRD 90F



Richmond General

Feb 19/2019 93% CPM4099201

Homo Polled	
BW	96
TM	38
Mature Wt	
2400	
AWW 205 Wt	
852	
# of Progeny	
23	
Avg BW	
85	
Avg AWW 205	
636	

RS

Richmond Zodiac SRD 29Z
Richmond Crusader SRD 53C
 Richmond Zandy SRD 49Z

Ivy's Marksman HTZ 10Z
Richmond Baccardi Girl SRD 45B
 Richmond Tina SRD 93T

SRD 45G



Richmond Emerald

Apr 17/2017 95% CPM4095725

Homo Polled	
BW	80
TM	39
Mature Wt	
2500	
AWW 205 Wt	
636	
# of Progeny	
36	
Avg BW	
80	
Avg AWW 205	
590	

RS

Diamond C Way Cool
Diamond C You're Cool NSC 3Y
 Diamond C Wedding

Richmond SIR J.R SRD 128S
Richmond Perfect Wish SRD 60W
 RPY Perfect Storm 10R

SRD 186E





EDW 122F

EDW Full Throttle

Feb 8/2018 93% CPM4098351

RS

Homo Polled	
BW	80
TM	35
Mature Wt N/A	
AWW 205 Wt N/A	
# of Progeny 16	
Avg BW 81	
Avg AWW 205 574	

Warrigal High Vision
Flemington Legend L12
 Flemington Polled Pride H1
 Magswl Usual Suspect 538U
EDW Yasmine
 RPY Paynes Venus 22U



RWK 147F

EDW Fake News

Jan 20/2018 92% CPM4098370

RS

Homo Polled	
BW	86
TM	37
Mature Wt N/A	
AWW 205 Wt N/A	
# of Progeny 17	
Avg BW 83	
Avg AWW 205 606	

MRL X-Rated 014X
Cole Architect 08A
 Cole Miss Lodestar 826U
 Mags Sasquatch
EDW Xenia
 EDW Uncommon



GJR 11B

Lakeroad Belvin

May 5/2014 95% CPM0221311

RS

Homo Polled	
BW	90
TM	40
Mature Wt 2400	
AWW 205 Wt N/A	
# of Progeny 69	
Avg BW 85	
Avg AWW 205 574	

Grand Dam
 Anchor B 'The Smooze'
LEC/BOHRS Sir Watson 89W
 Watcha Table Dancer 2T
 Richmond Sir. J.R SRD 128S
Richmond Miss SRD 143X
 Richmond SRD 6R

RPY Paynes RedMan

Jan 1/2019 92% CPM4099916

Homo Polled	
BW	82
TM	39
Mature Wt 2400	
AWW 205 Wt N/A	
# of Progeny 44	
Avg BW 78	
Avg AWW 205 605	

RS

Cole Architect 08A
RPY Paynes Cracker 17E
 EDW Beach Body

 Anchor B "The Boss"
Anchor B Cassidy 10C
 Anchor B Sheridan



RPY 1G

Richmond Anthem

Apr 14/2017 48% CXM4095700

Homo Polled	
BW	80
TM	42
Mature Wt 2300	
AWW 205 Wt 629	

RS

Red Bar E-L Anthem 46A

 RPY Paynes Marathon 47U
Richmond Xceptional SRD 42X
 Richmond Neat-o SRD 5N



SRD 166E

Richmond Doc Holiday

Apr 12/2016 96% CPM4085666

Homo Polled	
BW	80
TM	37
Mature Wt 2500	
AWW 205 Wt 807	
# of Progeny 70	
Avg BW 82	
Avg AWW 205 636	

RS

Diamond C Way Cool
Diamond C You're Cool NSC 3Y
 Diamond C Wedding

 TMF Westwood 505W
Excel Ysabel SRD 118Y
 TJS PLD Peek A Boo



SRD 101D

April 11/2020
CPM4104977 95%

Richmond Hulk SRD 117H

1



Homo Polled	
PV	
BW	86
CR	1
DOC	2
Age of Dam	7
AWW 205 Wt	609
Jan 15 Wt.	1800
GOG	3.06
ADG	3.79

Richmond Grand Duke SRD 8D
 Nordel Trendsetter
Richmond Aurora SRD 166A
 Richmond Xaminer SRD 13X

April 2/2020
CPM4104958 96%

Richmond Duke SRD 53H

2



Homo Polled	
PV	
BW	87
CR	1
DOC	2
Age of Dam	9
AWW 205 Wt	615
Jan 15 Wt.	1850
GOG	3.47
ADG	3.95

Richmond Grand Duke SRD 8D
 RPY Paynes Marathon 47U
Richmond Young&Restless SRD 188Y
 Richmond Pleasure SRD 117P

3**Richmond Duke SRD 61H**

Apr 4/2020 94% CPM4104962

Homo
Polled**Richmond Grand Duke SRD 8D**

PV

Ivy's Marksman HTZ 10Z

BW 92

Richmond Center Piece SRD 86C

CR 1

Richmond SRD 43X

DOC 4

Age of Dam
5AWW 205 Wt
654Jan 15 Wt.
1700

GOG 2.86

ADG 2.74

**4****Richmond Duke SRD 68H**

Apr 5/2020 96% CPM4104964

Homo
Polled**Richmond Grand Duke SRD 8D**

SV

Diamond C You're Cool

BW 100

Richmond Bright Star SRD 125B

CR 1

Richmond Tiffany SRD 107T

DOC 2

Age of Dam
6AWW 205 Wt
620Jan 15 Wt.
1930

GOG 3.37

ADG 4.07

**5****Richmond Hades SRD 181H**

Apr 21/2020 95% CPM4105014

Homo
Polled**Richmond Grand Duke SRD 8D**

PV

Dimond C You're Cool

BW 100

Richmond April SRD 80A

CR 1

Richmond Wisdom SRD 206W

DOC 5

Age of Dam
7AWW 205 Wt
726Jan 15 Wt.
1880

GOG 3.71

ADG 3.79





Richmond Grand Duke SRD 8D
 Wulfs Yellowjacket K687Y
Richmond Aquamarine SRD 148A
 Richmond Uptown Girl SRD 97U

Terms to be announced

Homo Polled	
PV	
BW	88
CR	2
DOC	2
Age of Dam 7	
AWW 205 Wt 698	
Jan 15 Wt. 1900	
GOG	3.23
ADG	4.23

Richmond Hector SRD 178H might just be one of the best bulls we have ever raised. We are extremely excited about what his future holds and feel he is a legend in the making. In just his pedigree alone he has the consistency of production on the maternal side along with the raw muscle mass and power on the paternal side making for a deadly combination.



Richmond Aquamarine SRD 148A

With a top replacement female in the herd, and four powerful herd sires raised to date it goes without saying that SRD 148A has been a no-miss cow when it comes to production. This pedigree is sure to add great maternal strength into your cow-herd and power and performance into your calf crop. See 148A sons pictured below.

THE PROOF IS IN THE PROGENY



2017

2018

2019

7

Richmond Hurricane SRD 138H

April 15/2020

91% CPM4104983

Hetero Polled
PV
BW 95
CR 1
DOC 2
Age of Dam 7
AWW 205 Wt 685
Jan 15 Wt. 1800
GOG 3.61
ADG 2.98

**Richmond Grand Duke SRD 8D**

Wulfs Yellowjacket K687Y

Richmond Adelle SRD 107A

Richmond SRD 94U

**8**

Richmond Heart Throb SRD 69H

April 5/2020

95% CPM4104965

Homo Polled
PV
BW 93
CR 1
DOC 2
Age of Dam 11
AWW 205 Wt 642
Jan 15 Wt. 1780
GOG 3.16
ADG 3.99

**Richmond Grand Duke SRD 8D**

Richmond SIR J.R SRD 128S

Richmond Wisdom SRD 121W

Richmond Jelltbean SRD 362J





Richmond Duke SRD 152H

Apr 16/2020 94% CPM4104984

Richmond Grand Duke SRD 8D

Richmond S.I.R JR SRD 128S
Richmond Perfect Wish SRD 60W
 RPY Perfect Storm 10R

9

Homo Polled	
PV	
BW	70
CR	2
DOC	2
Age of Dam	11
AWW 205 Wt	552
Jan 15 Wt.	1500
GOG	2.65
ADG	2.82



Richmond Bobby Hull SRD 163H

Apr 18/2020 93% CPM4104989

Richmond Grand Duke SRD 8D

Richmond Zodiac SRD 29Z
Richmond Exception SRD 265E
 Richmond Adelle SRD 107A

10

Homo Polled	
PV	
BW	88
CR	2
DOC	2
Age of Dam	3
AWW 205 Wt	620
Jan 15 Wt.	1625
GOG	3.23
ADG	3.02



Richmond Duke SRD 95H

Apr 10/2020 94% CPM4104969

Richmond Grand Duke SRD 8D

Richmond Zodiac SRD 29Z
Richmond Tina SRD 23E
 Richmond Tina SRD 93T

11

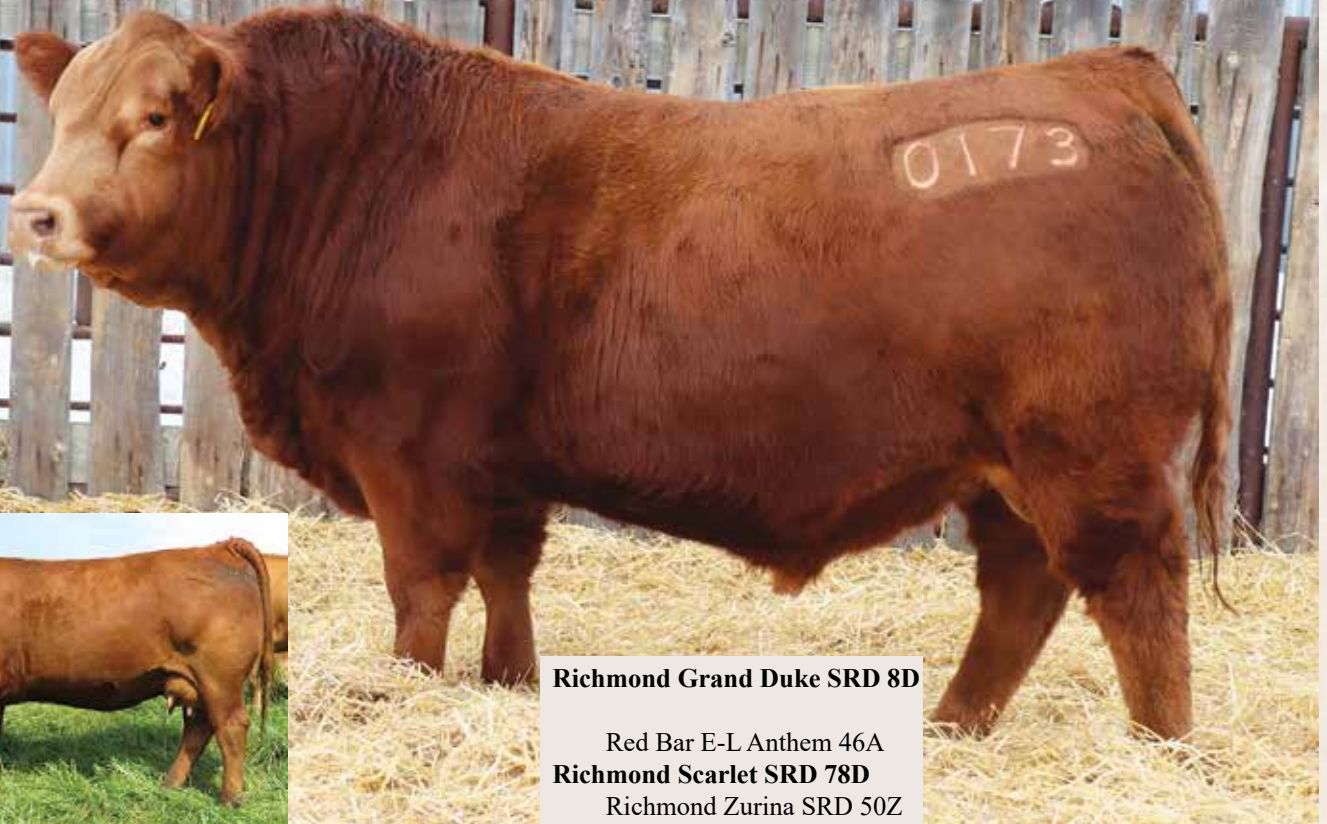
Homo Polled	
PV	
BW	80
CR	2
DOC	2
Age of Dam	3
AWW 205 Wt	531
Jan 15 Wt.	1585
GOG	2.99
ADG	3.43

12**Richmond Duke SRD 173H**

April 20/2020

70% CXM4105012

Homo Polled
SV
BW 77
CR 1
DOC 3
Age of Dam 4
AWW 205 Wt 691
Jan 15 Wt. 1775
GOG 3.13
ADG 3.43

**Richmond Grand Duke SRD 8D**

Red Bar E-L Anthem 46A

Richmond Scarlet SRD 78D

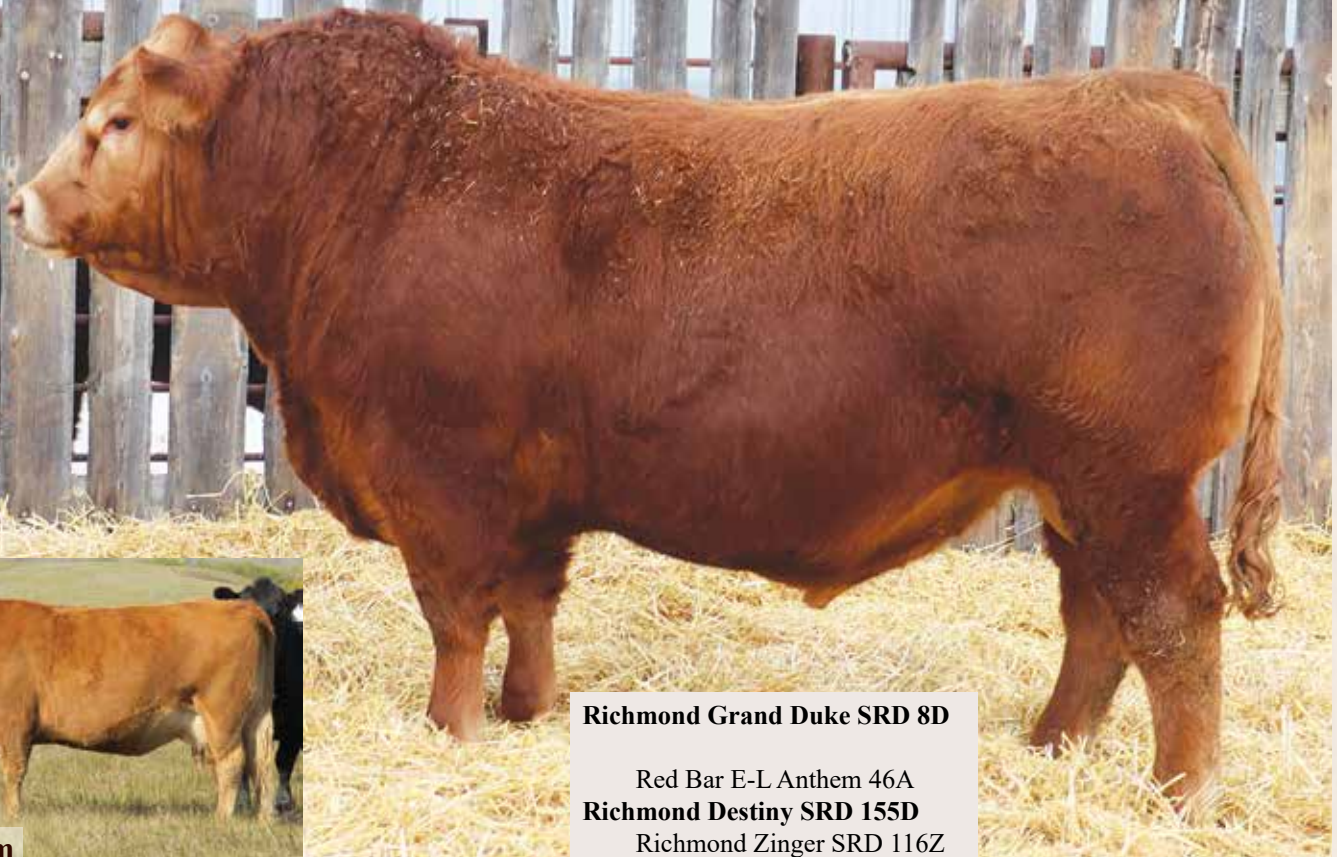
Richmond Zurina SRD 50Z

**13****Richmond Duke SRD 116H**

April 11/2020

71% CXM4104976

Homo Polled
SV
BW 105
CR 1
DOC 2
Age of Dam 4
AWW 205 Wt 661
Jan 15 Wt. 1875
GOG 3.40
ADG 3.43

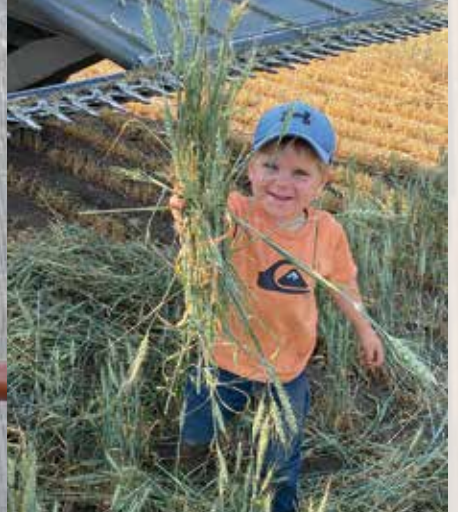
**Richmond Grand Duke SRD 8D**

Red Bar E-L Anthem 46A

Richmond Destiny SRD 155D

Richmond Zinger SRD 116Z

**Grand Dam**



14**Richmond Belvin SRD 191H**

April 22/2020

93% CPM4105015

Homo Polled	
PV	
BW	87
CR	2
DOC	3
Age of Dam	
10	
AWW 205 Wt	
586	
Jan 15 Wt.	
1580	
GOG	2.52
ADG	3.06

**Lakeroad Belvin**

Nordal Trendsetter
 Richmond Miss SRD 62X
 Richmond SRD 42M

**15****Richmond Belvin SRD 218H**

April 27/2020

83% CXM4105001

Homo Polled	
SV	
BW	103
CR	1
DOC	2
Age of Dam	
4	
AWW 205 Wt	
742	
Jan 15 Wt.	
1710	
GOG	3.13
ADG	3.31

**Lakeroad Belvin**

Richmond X-Celler SRD 137X
 Richmond Yasmin SRD 232D
 Richmond Yasmin SRD 101Y

April 21/2020
CPM4104996 95%

Richmond Belvin SRD 182H

16



Hetero Polled	
PV	
BW	96
CR	1
DOC	3
Age of Dam	10
AWW 205 Wt	632
Jan 15 Wt.	1715
GOG	2.79
ADG	3.67

Lakeroad Belvin
Nordal Trendsetter
Richmond Xotic SRD 79X
Richmond Precious SRD 40P



April 30/2020
CPM4105383 96%

Richmond High Level SRD 226H

17



Homo Polled	
PV	
BW	88
CR	2
DOC	3
Age of Dam	4
AWW 205 Wt	650
Jan 15 Wt.	1730
GOG	3.47
ADG	3.39

Lakeroad Belvin
Diamond C You're Cool
Richmond Delight SRD 81D
Richmond Miss SRD 123Z



Grand Dam

18**Nem Hollywood 43H****Mar 22/2020 95% CPM4104928**

Homo Polled	
PV	
BW	75
CR	2
DOC	2
Age of Dam 4	
AWW 205 Wt 652	
Jan 15 Wt. 1920	
GOG	3.06
ADG	3.79

Richmond Doc Holiday SRD 101D

Ken-Doc Zimmerman
Ken-Doc Daisy KGS 7D
 HSF Xpectable

**19****Richmond Highlight SRD 176H****Apr 20/2020 73% CXM4104994**

Homo Polled	
SV	
BW	75
CR	3
DOC	2
Age of Dam 5	
AWW 205 Wt 638	
Jan 15 Wt. 1710	
GOG	3.27
ADG	3.47

Richmond Anthem SRD 166E

Richmond X-Celler SRD 137X
Richmond Collectable SRD 205C
 Richmond Winnie SRD 209W

**20****Richmond High Flyer SRD 155H****Apr 17/2020 73% CXM4104986**

Homo Polled	
PV	
BW	95
CR	2
DOC	2
Age of Dam 10	
AWW 205 Wt 651	
Jan 15 Wt. 1710	
GOG	2.99
ADG	3.31

Richmond Anthem SRD 166E

Richmond SIR J.R SRD 128S
Richmond Xact SRD 40X
 Stoneyview Update





Richmond HotShot SRD 102H

Apr 10/2020 94% CPM4104973

21

EDW Full Throttle

Richmond Crusader SRD 53C
Richmond Flower Girl SRD 218F
 Richmond Zeva TSR 54Z

Homo Polled	
PV	
BW	90
CR	1
DOC	2
Age of Dam 2	
AWW 205 Wt 620	
Jan 15 Wt. 1760	
GOG	3.44
ADG	3.39



Richmond Handsome SRD 59H

Apr 3/2020 93% CPM4104961

22

EDW Full Throttle

Wulfs Waldo T928W
Richmond Miss SRD 176Z
 Richmond Randi SRD 52R

Hetero Polled	
PV	
BW	85
CR	2
DOC	3
Age of Dam 8	
AWW 205 Wt 609	
Jan 15 Wt. 1745	
GOG	3.23
ADG	3.59



Richmond Homer SRD 60H

Apr 3/2020 93% CPM4105023

23

EDW Full Throttle

Wulfs Waldo T928W
Richmond Miss SRD 176Z
 Richmond Randi SRD 52R

Homo Polled	
PV	
BW	75
CR	2
DOC	4
Age of Dam 8	
AWW 205 Wt 550	
Jan 15 Wt. 1600	
GOG	2.55
ADG	3.23

24**Richmond Hummer SRD 177H****Apr 20/2020 95% CPM4105013**

Homo Polled	
PV	
BW	77
CR	2
DOC	2
Age of Dam	
3	
AWW 205 Wt	
569	
Jan 15 Wt.	
1700	
GOG	3.06
ADG	4.03

EDW Full Throttle

Diamond C You're Cool
Richmond EvenStorm SRD 148E
 Richmond Trooper SRD 159T

**Grand Dam****25****Richmond Hudson SRD 214H****Apr 27/2020 94% CPM4105000**

Homo Polled	
PV	
BW	80
CR	2
DOC	2
Age of Dam	
3	
AWW 205 Wt	
610	
Jan 15 Wt.	
1660	
GOG	3.30
ADG	3.83

EDW Full Throttle

Diamond C You're Cool
Richmond Encanto SRD 240E
 Richmond Miss SRD 176Z

**26****Richmond Hornet SRD 262H****May 15/2020 89% CXM4105021**

Homo Polled	
SV	
BW	70
CR	3
DOC	3
Age of Dam	
12	
AWW 205 Wt	
547	
Jan 15 Wt.	
1540	
GOG	2.59
ADG	3.87

EDW Full Throttle

Richmond SIR J.R SRD 128S
Richmond Unresistable SRD 94U
 SRD Kayla 91K



April 9/2020
CPM4104967 95%

Richmond Emerald SRD 91H

27



Richmond Emerald SRD 186E
Richmond Ace TSR 39A
Ken-Doc First Lady 1F
Ken-Doc Camille



Grand Dam

Homo Polled	
PV	
BW	98
CR	1
DOC	2
Age of Dam	
2	
AWW 205 Wt	
715	
Jan 15 Wt.	
1960	
GOG	4.49
ADG	4.03

April 14/2020
CPM4104982 95%

Richmond Hercules SRD 132H

28



Richmond Emerald SRD 186E
Wulfs Yellowjacket K687Y
Richmond Athena SRD 88A
Richmond Xtreme SRD 141X

Scur	
PV	
BW	82
CR	2
DOC	3
Age of Dam	
7	
AWW 205 Wt	
649	
Jan 15 Wt.	
1700	
GOG	2.93
ADG	2.82

29**Richmond Emerald SRD 62H**

Apr 4/2020 96% CPM4104963

Homo Polled	
SV	
BW	70
CR	3
DOC	2
Age of Dam 2	
AWW 205 Wt 604	
Jan 15 Wt. 1720	
GOG	3.67
ADG	3.06

Richmond Emerald SRD 186E

Richmond Zodiac SRD 29Z

Richmond Falcon SRD 67F

Richmond Young SRD 188Y

**30****Richmond Hot Rod SRD 158H**

Apr 17/2020 95% CPM4104988

Homo Polled	
PV	
BW	75
CR	3
DOC	2
Age of Dam 2	
AWW 205 Wt 628	
Jan 15 Wt. 1600	
GOG	2.89
ADG	3.19

Richmond Emerald SRD 186E

Richmond Davidson SRD 210D

Richmond Fantasy SRD 95F

Richmond Athena SRD 52D

**31****Richmond Emerald SRD 125H**

Apr 13/2020 95% CPM4104981

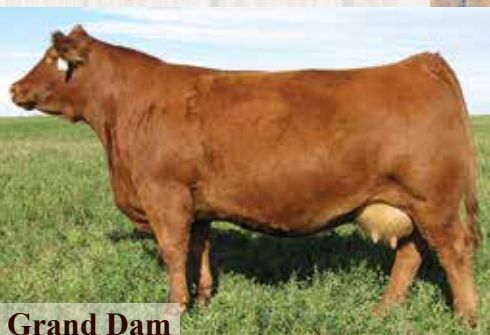
Homo Polled	
PV	
BW	85
CR	2
DOC	2
Age of Dam 2	
AWW 205 Wt 614	
Jan 15 Wt. 1740	
GOG	3.67
ADG	3.15

Richmond Emerald SRD 186E

Richmond Ace TSR 39A

Richmond First Class SRD 21F

Richmond Xotic SRD 6X

**Grand Dam**

April 19/2020

CPM4104993 95%

Richmond Hoofprince SRD 172H

32



Scur	
PV	
BW	75
CR	3
DOC	2
Age of Dam	
2	
AWW 205 Wt	
577	
Jan 15 Wt.	
1720	
GOG	2.86
ADG	4.35

Richmond Emerald SRD 186E

Richmond Zodiac SRD 29Z

Richmond Flirt SRD 248F

Richmond Country SRD 228C

April 11/2020

CPM4104974 95%

Richmond Emerald SRD 112H

33



Homo Polled	
PV	
BW	75
CR	3
DOC	3
Age of Dam	
2	
AWW 205 Wt	
605	
Jan 15 Wt.	
1600	
GOG	3.20
ADG	2.82

Richmond Emerald SRD 186E

Richmond Zodiac SRD 29Z

Richmond Fancy SRD 81F

Richmond Zandy SRD 151Z

34**NEM Hawk Eye 85H****Apr 8/2020 95% CPM4104925**

Scur	
PV	
BW	84
CR	2
DOC	2
Age of Dam	
3	
AWW 205 Wt	
605	
Jan 15 Wt.	
1580	
GOG	2.45
ADG	2.98

Richmond Emerald SRD 186E

Richmond Ace TSR 39A
Ken-Doc Evelyn 2E
 Ken-Doc Patty

**35****Richmond Emerald SRD 232H****May 2/2020 94% CPM4105018**

Homo Polled	
PV	
BW	75
CR	3
DOC	2
Age of Dam	
2	
AWW 205 Wt	
654	
Jan 15 Wt.	
1500	
GOG	3.16
ADG	2.50

Richmond Emerald SRD 186E

Richmond Grand Duke SRD 8D
Richmond Fox Trot SRD 55F
 Richmond Tina SRD 93T

**36****Richmond Emerald SRD 264H****May 16/2020 95% CPM4105008**

Homo Polled	
PV	
BW	75
CR	3
DOC	3
Age of Dam	
3	
AWW 205 Wt	
582	
Jan 15 Wt.	
1600	
GOG	2.67
ADG	3.87

Richmond Emerald SRD 186E

Richmond Chance SRD 172C
Richmond Elis SRD 163E
 Richmond Celebrate SRD 111C



April 3/2020
CPM4104960 95%

Richmond Handy Man SRD 57H

37



Homo Polled	
PV	
BW	70
CR	3
DOC	2
Age of Dam	2
AWW 205 Wt	598
Jan 15 Wt.	1635
GOG	2.99
ADG	2.90

Richmond Emerald SRD 186E
 Richmond Zodiac SRD 29Z
Richmond Fox Fire SRD 147F
 Richmond Zinger SRD 116Z

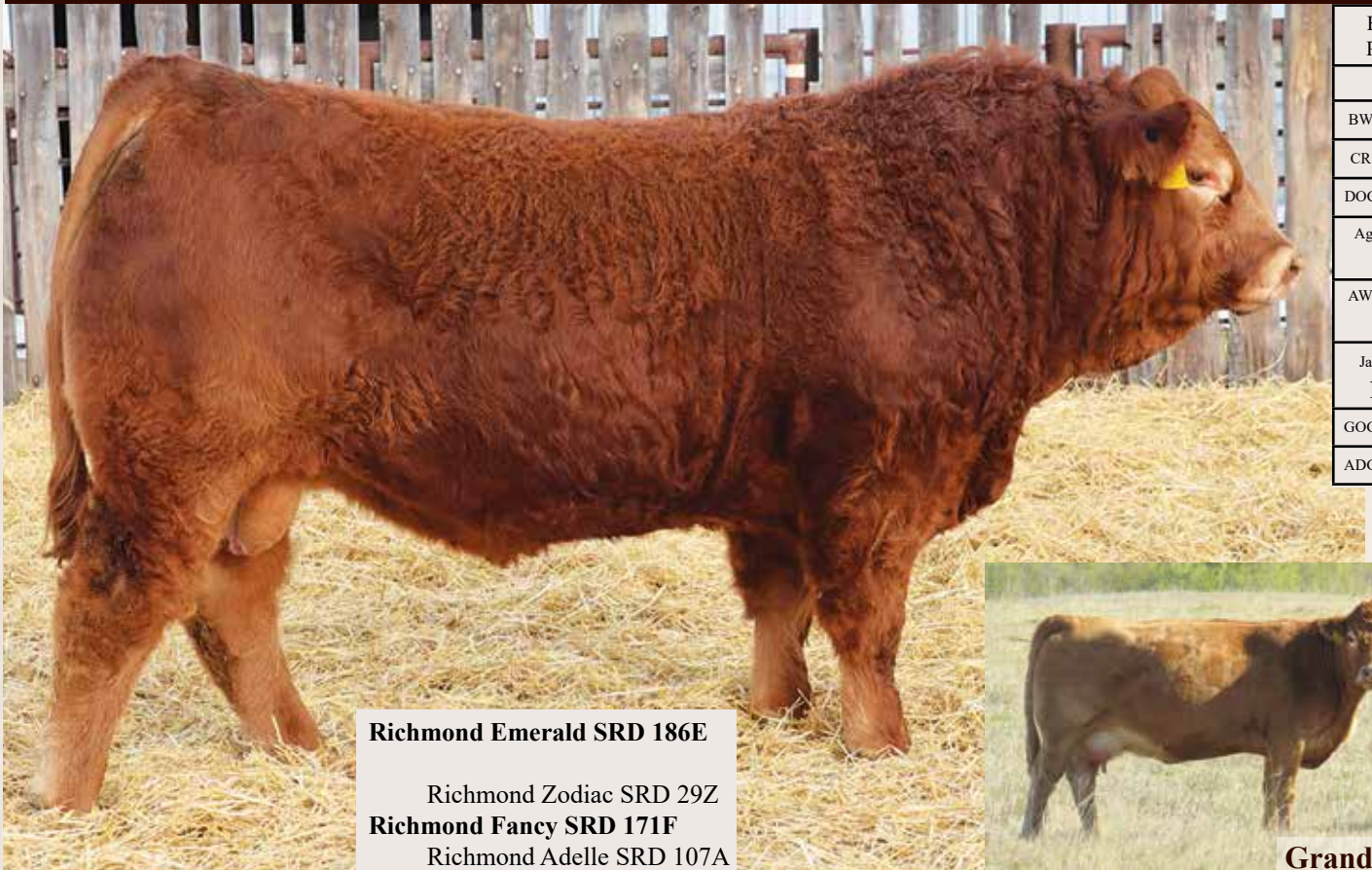


Grand Dam

April 9/2020
CPM4104968 93%

Richmond Hawkins SRD 93H

38



Homo Polled	
PV	
BW	68
CR	3
DOC	2
Age of Dam	2
AWW 205 Wt	592
Jan 15 Wt.	1600
GOG	3.23
ADG	2.78

Richmond Emerald SRD 186E
 Richmond Zodiac SRD 29Z
Richmond Fancy SRD 171F
 Richmond Adelle SRD 107A



Grand Dam

39**Richmond Casualty SRD 44H****Mar 24/2020 93% CPM4104957**

Homo Polled	
PV	
BW	75
CR	3
DOC	2
Age of Dam 2	
AWW 205 Wt 544	
Jan 15 Wt. 1590	
GOG	3.40
ADG	2.74

Hunt Credentials
Greenwood Emotion JSP 751E
 Greenwood Wisteria Lane

Richmond Casualty SRD 149C
Hansen's Fantasy SEH 13F
 Richmond Miss 202B

**40****Richmond Zodiac SRD 267H****May 17/2020 71% CXM4105009**

Homo Polled	
SV	
BW	93
CR	2
DOC	4
Age of Dam 7	
AWW 205 Wt 693	
Jan 15 Wt. 1700	
GOG	3.40
ADG	3.23

Richmond Zodiac SRD 29Z

Riverside Net Worth 2Y
Richmond Amanda SRD 173A
 Richmond SRD 133U

**41****Richmond Zodiac SRD 256H****May 11/2020 92% CPM4105020**

Homo Polled	
SV	
BW	78
CR	3
DOC	4
Age of Dam 2	
AWW 205 Wt 619	
Jan 15 Wt. 1575	
GOG	3.54
ADG	3.02

Richmond Zodiac SRD 29Z

Richmond Grand Duke SRD 8D
Richmond Fiona SRD 100F
 Richmond SRD 94U

**Grand Dam**

Richmond Hero SRD 26H ET

42



Wulfs Waldo T928W
RPY Paynes Marathon 47U
Richmond Xotic SRD 6X
RPY Perfect Storm 10R

Hetero Polled	
PV	
BW	98
CR	1
DOC	2
Age of Dam	ET
AWW 205 Wt	645
Jan 15 Wt.	1940
GOG	2.04
ADG	3.95



43**Richmond Zodiac SRD 251H**May 9/2020
94% CPM4105006

Homo Polled	
SV	
BW	75
CR	3
DOC	2
Age of Dam	
2	
AWW 205 Wt	
608	
Jan 15 Wt.	
1640	
GOG	2.99
ADG	3.87

**Richmond Zodiac SRD 29Z**Lakeroad Belvin
Richmond Fearless SRD 83F
Richmond SRD Yoselin 65Y**44****Richmond Zodiac SRD 243H**May 6/2020
93% CPM4105004

Homo Polled	
SV	
BW	85
CR	2
DOC	2
Age of Dam	
10	
AWW 205 Wt	
627	
Jan 15 Wt.	
1700	
GOG	3.06
ADG	3.63

**Richmond Zodiac SRD 29Z**CJSL Timetraveler 7051T
Pinnacle's Xpect Perfection 22X
EXLR 781K

April 17/2020
CPM4104985 93%

Richmond Fake News SRD 153H

45



Homo Polled	
PV	
BW	100
CR	1
DOC	3
Age of Dam	
4	
AWW 205 Wt	
757	
Jan 15 Wt.	
1880	
GOG	3.37
ADG	3.55

EDW Fake News

Richmond Zodiac SRD 29Z
Richmond Desert Angel SRD 237D
Richmond Excellent SRD 162X

April 9/2020
CPM4104992 93%

Richmond Fake News SRD 170H

46



Homo Polled	
PV	
BW	88
CR	1
DOC	2
Age of Dam	
4	
AWW 205 Wt	
622	
Jan 15 Wt.	
1740	
GOG	2.55
ADG	3.95

EDW Fake News

Richmond Zodiac SRD 29Z
Richmond Rebecca SRD 228D
Richmond Rebecca SRD 94R

47**Richmond FakeNews SRD 97H**

Apr 10/2020 94% CPM4104970

Homo Polled	
PV	
BW	70
CR	2
DOC	2
Age of Dam	
3	
AWW 205 Wt	
599	
Jan 15 Wt.	
1600	
GOG	3.06
ADG	3.23

EDW Fake News

Diamond C You're Cool
Richmond Emma SRD 116E
 Richmond Wisdom SRD 121W

**Grand Dam****48****Richmond HighTop SRD 228H**

May 2/2020 94% CPM4105024

Homo Polled	
SV	
BW	75
CR	2
DOC	2
Age of Dam	
3	
AWW 205 Wt	
626	
Jan 15 Wt.	
1675	
GOG	3.13
ADG	3.99

EDW Fake News

Diamond C You're Cool
Richmond Emma SRD 112E
 Richmond Uptown SRD 97U

**49****Richmond FakeNews SRD 120H**

Apr 12/2020 93% CPM4104979

Homo Polled	
PV	
BW	85
CR	2
DOC	2
Age of Dam	
3	
AWW 205 Wt	
642	
Jan 15 Wt.	
1725	
GOG	2.89
ADG	3.71

EDW Fake News

Richmond Zodiac SRD 29Z
Richmond Edna SRD 179E
 Richmond Amilia SRD 151A





Richmond FakeNews SRD 100H

Apr 10/2020 93% CPM4104972

50

EDW Fake News

Anchor B Great West
Richmond You Go Girl SRD 3Y
 Carpenter's Shanti

Homo Polled	
SV	
BW	72
CR	3
DOC	2
Age of Dam 9	
AWW 205 Wt 546	
Jan 15 Wt. 1525	
GOG	3.06
ADG	2.94



Richmond FakeNews SRD 205H

Apr 18/2020 93% CPM4102165

51

EDW Fake News

Richmond Ripper SRD 176R
Richmond Whirlwind SRD 73W
 LJM Rebecca 5R



Homo Polled	
PV	
BW	95
CR	1
DOC	2
Age of Dam 11	
AWW 205 Wt 656	
Jan 15 Wt. 1700	
GOG	3.06
ADG	2.82



52**Richmond Fake News SRD 99H**

April 10/2020

92% CPM4104971

Hetero Polled	
PV	
BW	72
CR	3
DOC	3
Age of Dam	
5	
AWW 205 Wt	
562	
Jan 15 Wt.	
1615	
GOG	2.52
ADG	3.91

**EDW Fake News**

Wulfs X Factor 7523X
Limolyn Corisande 585C
 Limolyn Tami

53**NEM Hot Rod 263H**

May 15/2020

93% CPM4104932

Homo Polled	
Homo Blk	
PV	
BW	90
CR	1
DOC	2
Age of Dam	
3	
AWW 205 Wt	
680	
Jan 15 Wt.	
1710	
GOG	3.03
ADG	3.63

**EDW Fake News**

EDW Colossal
EDW Extasy 522E
 EDW Zola

NEM John Wick 25J

54



Homo Polled	
PV	
BW	98
CR	1
DOC	1
Age of Dam 7	
AWW 205 Wt 780	
Jan 15 Wt. 1260	
ADG	3.40



Richmond Ferdinand SRD 90F
 Ivy's Marksman HTZ 10Z
Richmond Baccardi Girl SRD 45B
 Richmond Tina SRD 93T



Reserve Grand Champion Bull Farmfair 2021



Maternal Brother

55**NEM John Dutton 6J**

Jan 5/2021 94% CPM4111418

Scur

PV

BW 96

CR 1

DOC 1

Age of Dam

7

AWW 205 Wt

880

Jan 15 Wt.

1330

ADG 3.19

Richmond Ferdinand SRD 90F

Richmond Xecutive SRD 74X

Ken-Doc Bubbles KGS 39B

Ken-Doc Xotic Dancer

**56****NEM Joker 32J**

Feb 3/2021 93% CPM4111412

Hetero

Polled

PV

BW 92

CR 1

DOC 2

Age of Dam

6

AWW 205 Wt

670

Jan 15 Wt.

1180

ADG 3.62

Richmond General SRD 45G

Wulfs Xtractor X233X

Ken-Doc Courtney KGS 2C

Ken-Doc Dolly

**57****NEM James Bond 33J**

Feb 5/2021 93% CPM4111413

Homo

Polled

PV

BW 75

CR 2

DOC 2

Age of Dam

3

AWW 205 Wt

580

Jan 15 Wt.

1010

ADG 3.05

Richmond General SRD 45G

Excel Poll Orange Rose 25D

777 Cattle Fantasy 6F

Excel Polled My Lady





NEM John Wayne 8J

Jan 9/2021 93% CPM4111415

Richmond General SRD 45G

Ken-Doc Zimmerman
Ken-Doc Beckie KGS 18B
 Ken-Doc 34Z

58

Homo Polled	
PV	
BW	88
CR	2
DOC	1
Age of Dam	7
AWW 205 Wt	730
Jan 15 Wt.	1130
ADG	2.84



NEM Jedi 39J

Feb 12/2021 94% CPM4111414

Richmond General SRD 45G

Richmond Ace TSR 39A
Ken-Doc Daphne KGS 13D
 Ken-Doc Penny

59

Homo Polled	
PV	
BW	95
CR	1
DOC	2
Age of Dam	5
AWW 205 Wt	620
Jan 15 Wt.	1000
ADG	2.7



NEM Jackpot 26J

Jan 31/2021 93% CPM4111417

RPY Paynes Redman 1G

Richmond Ace TSR 39A
Ken-Doc Greta KGS 26G
 Ken-Doc Yoga

60

Homo Polled	
PV	
BW	68
CR	3
DOC	2
Age of Dam	2
AWW 205 Wt	560
Jan 15 Wt.	1010
ADG	3.19

61**Richmond Jackpot SRD 29J**

Feb 1/2021 93% CPM4111682

RPY Paynes Redman 1G

Richmond Grand Duke SRD 8D

Richmond Gwen SRD 3G

Anchor B Tonite Delite

Homo.P Pending	
SV.Pending	
BW	75
CR	3
DOC	2
Age of Dam 2	
AWW 205 Wt 640	
Jan 15 Wt. 1050	
ADG	3.26

**62****NEM Jester 17J**

Jan 22/2021 93% CPM4111411

RPY Paynes Redman 1G

Richmond Ace TSR 39A

Ken-Doc Lady Gaga KGS 1G

Ken-Doc April

Homo Polled	
PV	
BW	60
CR	3
DOC	4
Age of Dam 2	
AWW 205 Wt 575	
Jan 15 Wt. 1000	
ADG	3.01

**63****NEM Java 38J**

Feb 11/2021 94% CPM4111429

RPY Paynes Redman 1G

Richmond Doc Holiday SRD 101D

Ken-Doc Gracie KGS 29G

Ken-Doc 34Z

Homo Polled	
PV	
BW	75
CR	3
DOC	2
Age of Dam 2	
AWW 205 Wt 560	
Jan 15 Wt. 1000	
ADG	3.12



All Roads Lead Home





Celebrating 25 Years!











Richmond Ranch Guarantee: We stand behind our cattle 100%

Richmond Docility Rating or DOC: This docility rating has been established to help you determine the temperament and manageability of the bulls. We as breeders strive to hold our livestock to a high standard and that includes docility. In our program, we do not tolerate any problem animals and feel you should not either. No one knows these cattle better than us and throughout the calendar year these bulls have been sorted, processed, handled numerous times and are strictly culled to remove any behavioural problems. Below is an index defining the different categories we have decided upon. These are simply our ratings and cannot be compared to other breeders or numbering systems. Please feel free to contact us about any questions you may have.

1 = Pets – These cattle are exactly that; pets. They can be scratched in the pen and handled at all times.

2 = Calm – These cattle are very quiet, easy to handle when isolated. They do not frighten when you are working them but you cannot get close enough in the pen to scratch them.

3 = Average – These cattle are calm in the group, you can walk through them without disruption. When sorting these cattle, they are easy to stop and hold but can get uneasy and impatient when worked alone.

4 = Slightly Restless – these cattle are the ones at the back of the group in the pen; they do not disrupt the rest of the pen; they are manageable in a group but become agitated and nervous when isolated or worked alone.

5 = Nervous – these cattle are constantly moving away from you in the pen, can disrupt the group, and needs to be managed with a buddy. These cattle are hard to stop when sorting and become easily agitated if alone.

6 = Heads Up – these cattle have a big flight zone, they will be the first to run away, should be handled with a buddy, cannot be stopped or isolated. When sorting in an alley, these cattle will run past sideways or snort at you. These cattle can become aggressive when agitated. These cattle are most commonly culled from our herd.

7 = Hunters – these cattle cannot be trusted at all, even in a group they will become aggressive and cannot be handled. These animals are culled immediately.

ANGUS DIVISION

*Offering Elite Black Angus &
Red Angus Genetics*






Are you looking for calving ease? Check out our calving scores on each bull!

Calving Rating or CR: We have taken into consideration our knowledge on the cow families, calving histories, birth weight, and phenotypical shape as a baby calf to help you better select a herd bull based on your calving needs. These numbers are not calculated; they are an estimate based on how we ourselves would use the bull if we were breeding our own cows. *All Bulls are guaranteed to calve easy on cows*

3 = Could be safely used on heifers.

2 = May be used on heifers with a family history of calving ease. Could be used safely on all cows.

1 = Can be used safely on all cows.





Producing Cattle that GAIN on GRASS.

The 2022 bull pen gained over 3 lbs. on grass

We are very proud of this offering. The purebred cattle here at Richmond Ranch are raised ranch style and calved out the way you calve, so the cattle will excel in ranch conditions. The do it themselves ranch cows stay out on native grass until late fall when the calves are weaned off. The calves are wintered in a 20-acre pen on a combination of quality forages ensiled to get them through the winter and back on Grass. This program is designed to develop cattle for longevity and success in any program. We have always selected cattle that thrive on grass, selecting powerful herd sires that stick to the basics of beef, thick and naturally fleshing. This past April 19th we took a weight on our sale bulls just before we sent them to grass (There was a bit of silage fed on the pasture until Grass started to grow) we brought them back home on Sept 13th for a weight off pasture. They went back to the pasture but were supplemented as grass was becoming dormant. The Bulls came back to the yard Nov 17 for the winter to get ready for the sale.

We calculated the Gain on Grass from the April 19th weight and the Sept 13th weight. Over the 147 days the whole pen averaged 3.18 lbs. per day – (The Cheapest gain we can get!)

We have entered this data on each sale lot under “GOG” Gain on Grass.

We also calculated their Average Daily Gain from Sept 13 to their Jan 15th Weight.

Over the 140 days the whole pen averaged 3.46 lbs. /day

We have entered this data on each lot under “ADG” Average Daily Gain.

When pounds and profits matter, choose your next herd bull from quality genetics.





Richmond Defiance

May 12/2016 SRD 246D 1939102

RS

Black Angus	
BW	80
TM	43
Mature Wt	2300
AWW 205 Wt	670
# of Progeny	31
Avg BW	78.5
Avg AWW 205	614

Fleury Bardolene 120Z
Richmond Bruno SRD 77B
 Mia of Ring Creek 104Y

Willabar Future Direction
 50P **Willabar Tilda 117W**
 Willabar Tilda 64P



Believe YDF 46B

Feb 11/2014 1791677

RS

Black Angus	
BW	82
TM	43
Mature Wt	2700
AWW 205 Wt	836
# of Progeny	600
Avg BW	82.5
Avg AWW 205	666

YoungDale Knock Out 134U
Young Dale Xcaliber
 Brookmore Tibbie 222T

Young Dale Panarama 66T
Young Dale Grace 126Z
 Young Dale Grace 19T



Peak Dot Attractive

Jan 13/2018 PDAR 186F 2029235

Black Angus	
BW	76
TM	42
Mature Wt	2500
AWW 205 Wt	797
# of Progeny	138
Avg BW	77.5
Avg AWW 205	651

RS

JMB Traction 292
Schiefelbein Attractive 4565
 Frosty Answer 3979
 Vision Unanimous 1418
Peak Dot Erica 709B
 Erica of Peak Dot 752Z



Peak Dot No Doubt

Jan 15/2018 PDAR 197F 2023948

Black Angus	
BW	74
TM	43
Mature Wt	2100
AWW 205 Wt	809
# of Progeny	29
Avg BW	73
Avg AWW 205	595

RS

MOGCK Bullseye
Hoover No Doubt
 Miss Blackcap Ellston J2
 Peak Dot Epic 1069X
Peak Dot Lady 114A
 Lady of Peak Dot 415Y





Cockburn Cowboy Kind

Feb 20/2016 CWJ 635D 1942334

RS

Red Angus	
BW	84
TM	38
Mature Wt	2400
AWW 205 Wt	684
# of Progeny	21
Avg BW	73
Avg AWW 205	690

Red BUF CRK The Right Kind U199
Red Pie The Cowboy Kind 343
 Red Pie Cascade 561

 Red Lazy MC Hustle 18T
Red Cockburn Cora 140Y
 Red Wilbar Cora 443P



Red Six Mile Reckoning

Mar 10/2017 SIXM 178E 1995146

RS

Red Angus	
BW	90
TM	44
Mature Wt	2200
AWW 205 Wt	710
# of Progeny	65
Avg BW	79.5
Avg AWW 205	622

Red U-2 Recon 192Y
Red U-2 Reckoning 149A
 Red U-2 Anexa 271Y

 Peak Dot Eliminator 100Z
Red Six Mile Dixie 546C
 Red Sunberry Indeed 20Y



Red Bar E-L Anthem

Feb 14/2013 DBR 46A 1765119

RS

Red Angus	
BW	88
TM	43
Mature Wt	2500
AWW 205 Wt	753
# of Progeny	193
Avg BW	84.5
Avg AWW 205	671

Red Northline Atlantic City
Red Wheel Alliance 22U
 Red Wheel Auburn 2K

 Red SSS BoomTown 206D
Red Bar E-L Fradu 209U
 Red Bar E-L Scarlet 193S

Richmond Django

Apr 13/2018 SRD 87F 2076932

Red Angus	
BW	80
TM	43
Mature Wt	2300
AWW 205 Wt	651
# of Progeny	3

RS

Red Six Mile Grand Slam
Red Six Mile Django 258D
 Red Soo Line Annie 9222

 Red Bar 4A 103Y
Red Bar 4A Flo 38B
 Red Aspen Flo 48U



Cockburn Patriot 9048

Feb 14/19 CWJ 48G 2120393

Red Angus	
BW	90
TM	43
Mature Wt	2500
AWW 205 Wt	648
# of Progeny	84
Avg BW	82.5
Avg AWW 205	671

RS

Red Flying K Patriot 16B
Red T-S Patriot 84K
 Red CFRA Beefsteak 5F

 Red Bar E-L Ribeye 103R
Red Cockburn Cora 137Y
 Red Wilbar Cora 443P



May 11/2020
2176455

Richmond Attractive SRD 255H

64



PV	
BW	78
CR	3
DOC	3
Age of Dam	5
AWW 205 Wt	622
Jan 15 Wt.	1800
GOG	3.27
ADG	3.99

Peak Dot Attractive 186F
 HF Decisive 56Z
 Richmond Charisma SRD 145C
 XO Crowfoot Blackbird 2401Z



Apr 28/2020
2176477

Richmond Attractive SRD 222H

65



PV	
BW	85
CR	2
DOC	2
Age of Dam	3
AWW 205 Wt	700
Jan 15 Wt.	1800
GOG	3.27
ADG	3.71

Peak Dot Attractive 186F
 Believe YDF 46B
 Richmond Blackbird SRD 134E
 XO Crowfoot Blackbird 2401Z



66**Richmond Attractive SRD 159H**

April 14/2020

2176450

PV	
BW	85
CR	2
DOC	2
Age of Dam	
4	
AWW 205 Wt	
637	
Jan 15 Wt.	
1700	
GOG	3.71
ADG	2.70

**Peak Dot Attractive 186F**

Believe YDF 46B

Richmond Darling Lass SRD 71D

Richmond Black Lass SRD 147B

**67****Richmond Attractive SRD 137H**

April 15/2020

2176466

PV	
BW	73
CR	3
DOC	2
Age of Dam	
6	
AWW 205 Wt	
622	
Jan 15 Wt.	
1770	
GOG	3.4
ADG	3.79

**Peak Dot Attractive 186F**

HF U-Connect 138Y

Richmond Blackbeauty SRD 116B

Soo Line Lady Rusth 9185





Richmond Defiance SRD 208H

Apr 25/2020 2176370

68

Richmond Defiance SRD 246D

Mohnen South Dakota 402
Galten Mary 34C
 Jamesview Miss Morison 25W

PV	
BW	80
CR	3
DOC	2
Age of Dam	5
AWW 205 Wt	629
Jan 15 Wt.	1715
GOG	3.40
ADG	3.02



Richmond Defiance SRD 200H

Apr 23/2020 2176369

69

Richmond Defiance SRD 246D

OCC Legacy 839L
KFC Neora 0202X
 Remitall Neora 381L

PV	
BW	85
CR	2
DOC	3
Age of Dam	10
AWW 205 Wt	624
Jan 15 Wt.	1750
GOG	3.4
ADG	3.63



Richmond Defiance SRD 184H

Apr 21/2020 2176367

70

Richmond Defiance SRD 246D

HF Decisive 56Z
Richmond Candy Crush SRD 2C
 Richmond Athena SRD 28A

PV	
BW	80
CR	2
DOC	2
Age of Dam	5
AWW 205 Wt	571
Jan 15 Wt.	1800
GOG	4.05
ADG	3.47

71

Richmond Defiance SRD 221H

April 28/2020

2176373

SV	
BW	95
CR	1
DOC	3
Age of Dam	5
AWW 205 Wt	667
Jan 15 Wt.	1770
GOG	3.03
ADG	3.43

**Richmond Defiance SRD 246D**

Timber Trail Road Hammered
Galten Lass 119C
Worth-Mor Lass 6A

72

Richmond Defiance SRD 136H

April 14/2020

2176364

PV	
BW	93
CR	2
DOC	2
Age of Dam	6
AWW 205 Wt	603
Jan 15 Wt.	1700
GOG	3.13
ADG	3.06

**Richmond Defiance SRD 246D**

HF U-Connect 138Y
Richmond Black Lass SRD 147B
LLB Blue Lass 192U



Apr 27/2020
2176453

Richmond No Doubt SRD 216H

73



PV	
BW	80
CR	2
DOC	2
Age of Dam	
2	
AWW 205 Wt	
580	
Jan 15 Wt.	
1680	
GOG	3.57
ADG	3.06

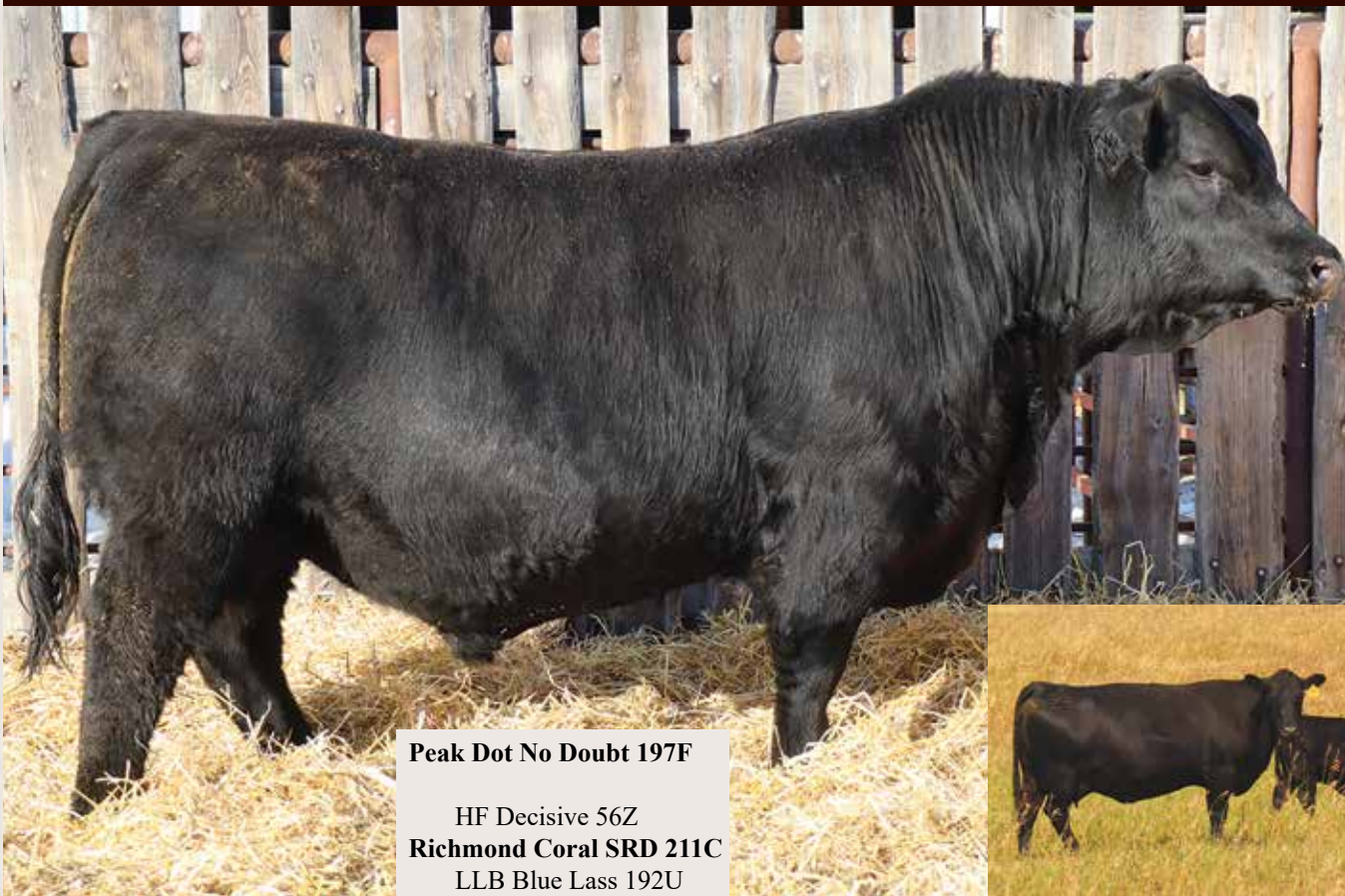
Peak Dot No Doubt 197F
 Richmond Defiance SRD 246D
Richmond Diamond SRD 178F
 Richmond Diamond SRD 61D



May 13/2020
2176456

Richmond No Doubt SRD 259H

74



PV	
BW	78
CR	2
DOC	2
Age of Dam	
5	
AWW 205 Wt	
638	
Jan 15 Wt.	
1780	
GOG	3.4
ADG	3.87

Peak Dot No Doubt 197F
 HF Decisive 56Z
Richmond Coral SRD 211C
 LLB Blue Lass 192U



75**Richmond No Doubt****Apr 22/20 SRD 190H 2176452**

PV	
BW	75
CR	3
DOC	2
Age of Dam	
3	
AWW 205 Wt	
582	
Jan 15 Wt.	
1710	
GOG	3.47
ADG	3.23

Peak Dot No Doubt 197F

Believe YDF 46B

Richmond Tilda SRD 251E

Willabar Tilda 117W

**76****Richmond No Doubt****Apr 13/20 SRD 126H 2177150**

PV	
BW	90
CR	1
DOC	2
Age of Dam	
2	
AWW 205 Wt	
716	
Jan 15 Wt.	
1760	
GOG	3.40
ADG	2.66

Peak Dot No Doubt 197F

Believe YDF 46B

Richmond Lass SRD 251F

Galten Lass 119C

**77****Richmond No Doubt****Apr 14/20 SRD 131H 2176449**

PV	
BW	72
CR	3
DOC	2
Age of Dam	
2	
AWW 205 Wt	
587	
Jan 15 Wt.	
1720	
GOG	3.67
ADG	3.55

Peak Dot No Doubt 197F

HF Electric Avenue 196D

Richmond Erica SRD 188F

KBJ Erica 50C

**Grand Dam**

April 9/2020
2185149

Richmond Attractive SRD 94H

78



PV	
BW	90
CR	2
DOC	2
Age of Dam	ET
AWW 205 Wt	664
Jan 15 Wt.	1680
GOG	3.44
ADG	2.42

Red Carrier

April 14/2020
2185226

Richmond Attractive SRD 133H

79



PV	
BW	83
CR	3
DOC	2
Age of Dam	ET
AWW 205 Wt	639
Jan 15 Wt.	1840
GOG	3.33
ADG	3.63

Red Carrier



PV	
BW	90
CR	2
DOC	1
Age of Dam	
ET	
AWW 205 Wt	
651	
Jan 15 Wt.	
1930	
GOG	2.38
ADG	4.68

Red Carrier

Peak Dot Attractive 186F

Red LJC Mission Statement P27
 Red Piro Brandina 304A
 Red Piro Brandina 0108X



Maternal Sister



Maternal Sister



Maternal Sister

Richmond Jentry SRD 4J

81



Red Carrier	
PV	
BW	75
CR	3
DOC	2
Age of Dam	
2	
AWW 205 Wt	
733	
Jan 15 Wt.	
1255	
ADG	3.58

Peak Dot Attractive 186F
Red Cockburn Cowboy Kind 635D
Red Richmond Brandina SRD 20G
Red Richmond Brandina SRD 44E



82**Red Richmond Jazzman****Jan 1/21 SRD 1J 2239067**

PV

BW 60

CR 3

DOC 3

Age of Dam
9AWW 205 Wt
684Jan 15 Wt.
1260

ADG 3.37

Red Richmond Django SRD 87F

Red Crowfoot Cowboy 7206T

Red Crowfoot 2109Z

Red Crowfoot Pearl 6350S

**83****Red Richmond Jester****Jan 1/21 SRD 3J 2239066**

PV

BW 75

CR 3

DOC 2

Age of Dam
6AWW 205 Wt
674Jan 15 Wt.
1200

ADG 3.05

Red Richmond Django SRD 87F

Red Wheel Dodge City 61Y

Red Bar 4A Spicy 200C

Red Brylor Spicy 67Z

**84****Red Richmond Cowboy****Feb 1/21 SRD 30J CM522024**

PV.Pending

BW 88

CR 3

DOC 2

Age of Dam
2AWW 205 Wt
738Jan 15 Wt.
1125

ADG 3.23

Red Cockburn Cowboy Kind 635D

Red Bar E-L Anthem 46A

Red Richmond Patriot SRD 8G

Red Piro Miss Patriot 520C



Jan 12/2021
2245435

Red Richmond Cowboy SRD 10J

85



PV	
BW	89
CR	2
DOC	2
Age of Dam	2
AWW 205 Wt	760
Jan 15 Wt.	1250
ADG	3.55

Red Cockburn Cowboy Kind 635D

Red Six Mile Reckoning 178E
Richmond Holly SRD 41G
Red Piro Holly 552C

Jan 23/2021
2245243

Red Richmond Joker SRD 19J

86



PV	
BW	88
CR	1
DOC	2
Age of Dam	2
AWW 205 Wt	819
Jan 15 Wt.	1310
ADG	3.76

Red Cockburn Patriot 9048

Red Bar E-L Anthem 46A
Red Richmond Brandina SRD 6G
Red Piro Brandina 304A

87**Red Richmond Jacob SRD 13J**

Jan 19/2021

2245420

PV	
BW	77
CR	3
DOC	2
Age of Dam	
2	
AWW 205 Wt	
680	
Jan 15 Wt.	
1175	
ADG	3.76

**Grand Dam****Red Cockburn Patriot 9048**

Red Bar E-L Anthem 46A
 Red Richmond Genevieve SRD 34G
 Red Piro Soapy 5133C

88**Red Richmond Jaffar SRD 15J**

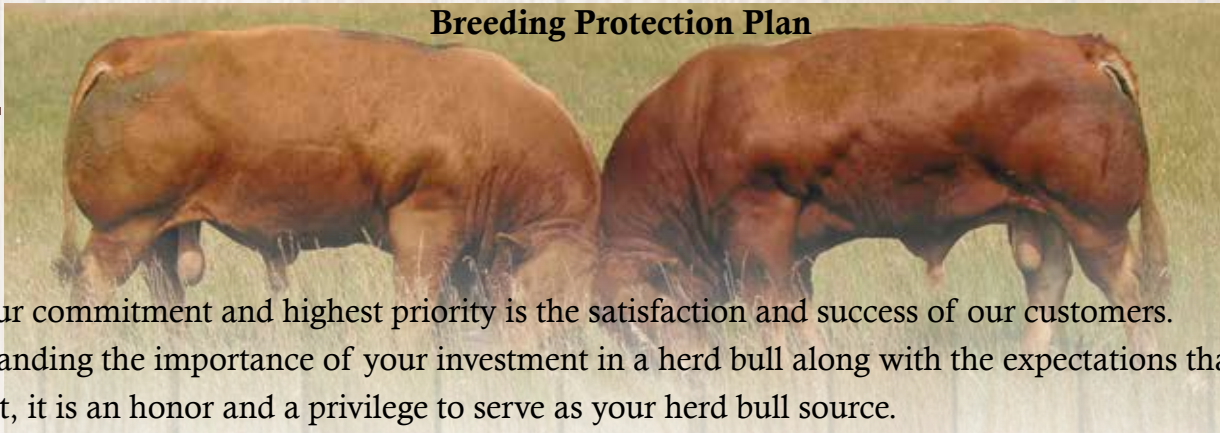
Jan 19/2021

2245421

PV	
BW	90
CR	1
DOC	2
Age of Dam	
2	
AWW 205 Wt	
732	
Jan 15 Wt.	
1260	
ADG	3.97

**Red Cockburn Patriot 9048**

Red Six Mile Reckoning 178E
 Red Richmond Lunarlady SRD 32G
 Red Bar 4A Lunarlady 62C



Our commitment and highest priority is the satisfaction and success of our customers. Understanding the importance of your investment in a herd bull along with the expectations that come with that, it is an honor and a privilege to serve as your herd bull source.

We will be offering our Breeding Protection Plan once again. Our goal is to help ensure your cows get bred and your investment is protected. We know that no matter how many precautions we take, bulls will be bulls, and injury or death is always a possibility. We still encourage that the best defense you can buy is a backup bull. One that you have selected, that stands ready in your yard. However, we understand this is not always an option for everyone and have designed our Breeding Protection Plan to better serve our valued customers.

With an additional 10% on the purchase price of your new bull: The Breeding Protection Plan will give you 1 year protection against injury or death with either a replacement bull, a credit for a future bull sale, or a combination of the two. If you should have any problem with your bull – Make Richmond Ranch your first call.

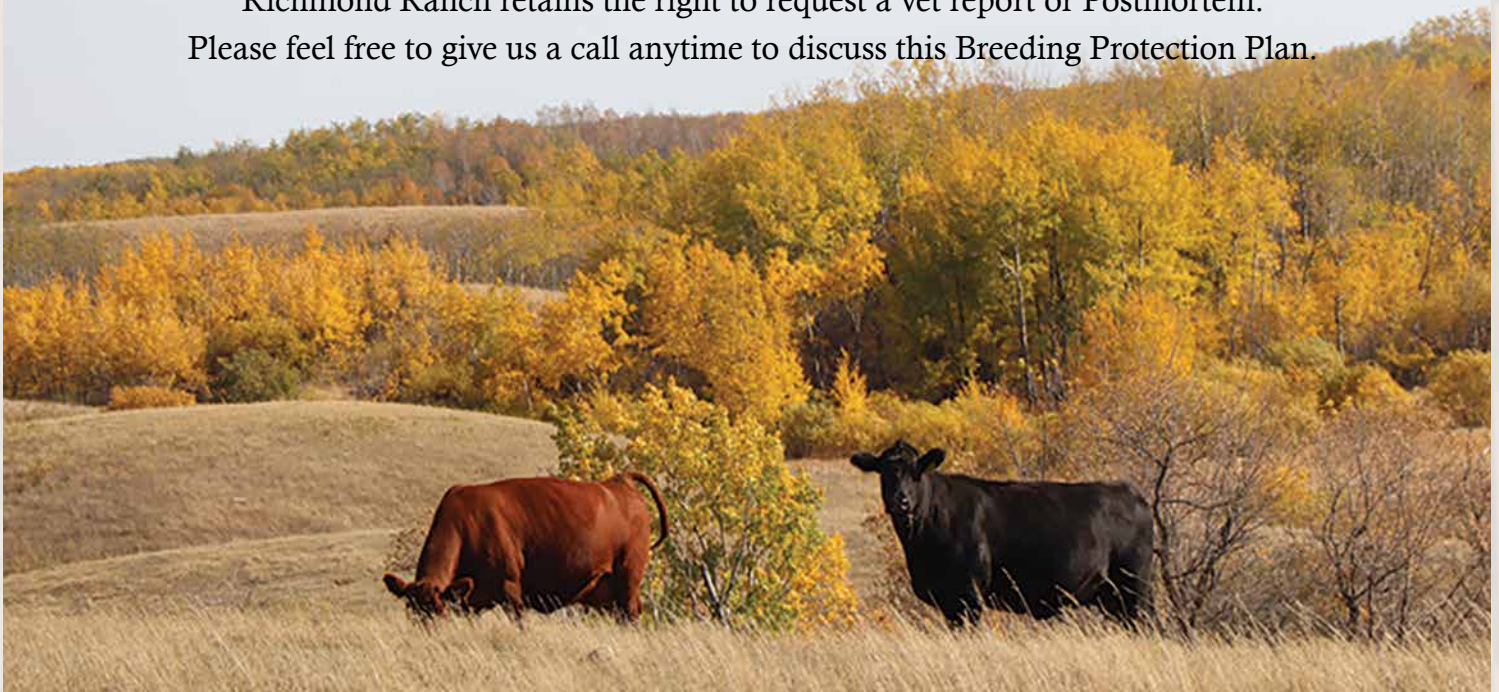
Jim or Stephanie at 403-323-8433 or 403-368-2103.

Richmond Ranch will do our best to resolve any issue with honesty and integrity to keep you a satisfied and repeat customer. That is our uncompromising commitment. Under our Breeding Protection Plan your bull is protected from injury, sickness, accident, structural breakdown, or death. The Breeding Protection Plan will not protect from any injury or death due to malicious, willful intentional acts of mistreatment.

Richmond Ranch retains the right to request photos.

Richmond Ranch retains the right to request a vet report or Postmortem.

Please feel free to give us a call anytime to discuss this Breeding Protection Plan.

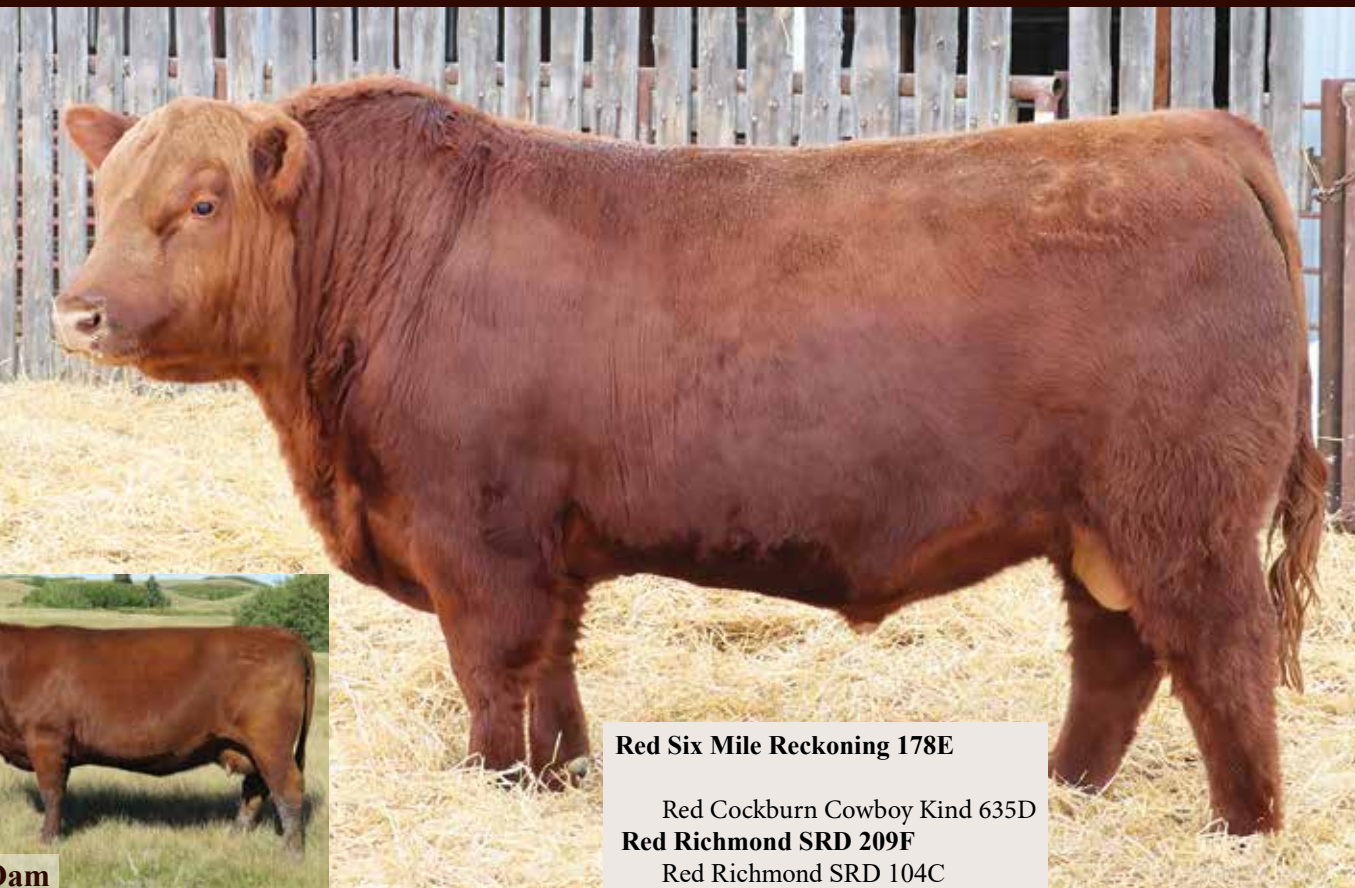


89**Red Richmond Reckoning SRD 179H**

April 20/2020

2176417

PV	
BW	102
CR	1
DOC	2
Age of Dam	2
AWW 205 Wt	643
Jan 15 Wt.	1880
GOG	3.81
ADG	4.19

**Red Six Mile Reckoning 178E**

Red Cockburn Cowboy Kind 635D
Red Richmond SRD 209F
 Red Richmond SRD 104C

**Grand Dam****90****Red Richmond Reckoning SRD 194H**

April 23/2020

2176443

PV	
BW	77
CR	2
DOC	2
Age of Dam	7
AWW 205 Wt	629
Jan 15 Wt.	1710
GOG	3.4
ADG	2.98

**Red Six Mile Reckoning 178E**

Red Piro Mission Statement 130Y
Red Piro Barbara 3116A
 Red Piro Barbara 817U



April 22/2020
2176420

Red Richmond Reckoning SRD 192H

91



PV	
BW	81
CR	2
DOC	3
Age of Dam	5
AWW 205 Wt	593
Jan 15 Wt.	1710
GOG	2.89
ADG	3.55

Red Six Mile Reckoning 178E

Red Piro Tradesman 325A
Red Piro Maxine 5110C
Red Piro Maxine 945W

May 10/2020
2176429

Red Richmond Reckoning SRD 252H

92



PV	
BW	77
CR	2
DOC	2
Age of Dam	3
AWW 205 Wt	631
Jan 15 Wt.	1650
GOG	3.13
ADG	3.55

Red Six Mile Reckoning 178E

Red Bar E-L Anthem 46A
Red Richmond Rosette SRD 209E
Red Piro Lady Rosette 315A

93**Red Richmond Reckoning SRD 242H**

May 6/2020

2176426

PV	
BW	75
CR	3
DOC	2
Age of Dam	4
AWW 205 Wt	635
Jan 15 Wt.	1675
GOG	2.79
ADG	3.75

**Red Six Mile Reckoning 178E**

Red Bar E-L Anthem 46A

Red Richmond Dazzle SRD 91D

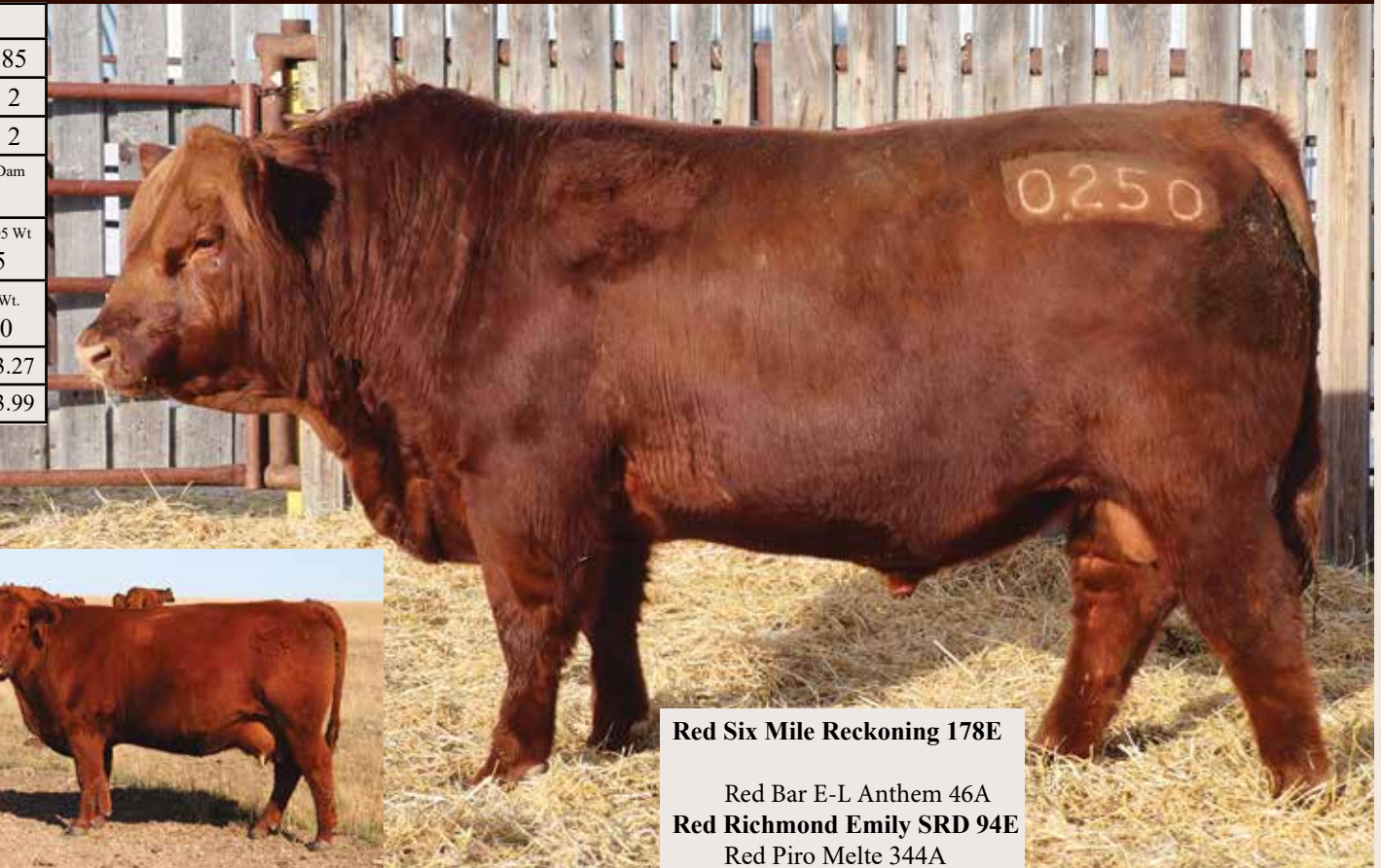
Red LLB Fanny 752W

94**Red Richmond Reckoning SRD 250H**

May 9/2020

2176427

PV	
BW	85
CR	2
DOC	2
Age of Dam	3
AWW 205 Wt	685
Jan 15 Wt.	1770
GOG	3.27
ADG	3.99

**Red Six Mile Reckoning 178E**

Red Bar E-L Anthem 46A

Red Richmond Emily SRD 94E

Red Piro Melte 344A

May 22/2020
2176433

Red Richmond Reckoning SRD 275H

95



PV	
BW	90
CR	1
DOC	2
Age of Dam	
5	
AWW 205 Wt	
625	
Jan 15 Wt.	
1800	
GOG	3.67
ADG	4.27

Red Six Mile Reckoning 178E

Red Biltrite Hitch 3X
Red Bar 4A Duchess 33C
Red Bar 4A Duchess 1X



April 27/2020
2176422

Red Richmond Reckoning SRD 217H

96



PV	
BW	70
CR	3
DOC	2
Age of Dam	
3	
AWW 205 Wt	
633	
Jan 15 Wt.	
1600	
GOG	2.65
ADG	3.23

Red Six Mile Reckoning 178E

Red Richmond Bando SRD 63B
Red Richmond Chayenne SRD 103E
Red Richmond SRD 82C



97

Red Richmond Reckoning

Apr 30/20 SRD 227H 2176424

PV	
BW	83
CR	2
DOC	2
Age of Dam	
3	
AWW 205 Wt	
646	
Jan 15 Wt.	
1800	
GOG	3.06
ADG	4.27

Red Six Mile Reckoning 178E

Red Richmond Bando SRD 63B
Red Richmond SRD 205E
Red Richmond SRD 104C



98

Red Richmond Reckoning

Apr 16/20 SRD 145H 2176416

PV	
BW	75
CR	3
DOC	2
Age of Dam	
3	
AWW 205 Wt	
595	
Jan 15 Wt.	
1560	
GOG	3.33
ADG	2.74

Red Six Mile Reckoning 178E

Red Piro Radar 524C
Red Richmond Marta SRD 13E
Red Piro Marta 550C



99

Red Richmond Reckoning

Apr 21/20 SRD 183H 2176523

PV	
BW	77
CR	3
DOC	2
Age of Dam	
3	
AWW 205 Wt	
551	
Jan 15 Wt.	
1650	
GOG	3.20
ADG	3.63

Red Six Mile Reckoning 178E

Red Bar E-L Anthem 46A
Red Richmond Brandina SRD 97E
Red Piro Brandina 3128A





HF The Train Station 179H

Jan 31/2020 2152005

HF Alcatraz 60F

Carruthers Net Worth 53U

HF Rosebud 276Z

HF Rosebud 68X

SS

PV

BW 80

AWW 205 Wt
798

Adj Y.Wt
1319

The following Angus heifers were pasture exposed July 6th to August 25th to HF The TrainStation 179H. Due to start calving April 15th 2022. These heifers were preg checked by a certified veterinarian.



Richmond Blown Away

May 18/2020 SRD 269H 2176474

Peak Dot Attractive 186F

HF U-Connect

Richmond Blown Away SRD 82B

Willabar Tilda 117W

100

PV

BW 65

Age of Dam
6

AWW 205 Wt
544



Richmond Burgess

Apr 23/2020 SRD 193H 2176469

Peak Dot Attractive 186F

Willow Net Worth 05U

Willow Burgess 1022

Willow Burgess R34

101

PV

BW 72

Age of Dam
9

AWW 205 Wt
614



102**Richmond Zelda**

Apr 8/2020 SRD 87H 2176461

PV

Peak Dot Attractive 186F

BW 70

Age of Dam
8

SAV Final Answer 0035

Richmond Zelda SRD 70Z

Willabar Ina 25W

AWW 205 Wt
542**103****Richmond Crush**

Apr 8/2020 SRD 80H 2176460

SV

Peak Dot Attractive 186F

BW 77

Age of Dam
3

Believe YDF 46B

Richmond Crush SRD 12E

Richmond Candy Crush SRD 2C

AWW 205 Wt
518**104****Richmond Black Beauty**

May 11/2020 SRD 254H 2176473

PV

Peak Dot Attractive 186F

BW 70

Age of Dam
3

Believe YDF 46B

Richmond Black Beauty SRD 234E

Richmond BlackBeauty SRD 116B

AWW 205 Wt
615**Grand Dam**



**Richmond Attractive
SRD 107H**

Peak Dot Attractive 186F

Red LJC Mission Statement P27

Red Piro Brandina 304A

Red Piro Brandina 0108X

SS	
Red Carrier	
BW	90
CR	2
DOC	1
AWW 205 Wt 651	
Jan 15 Wt. 1930	

The following heifers were pasture exposed July 6th to August 25th to Richmond Attractive SRD 107H (Lot 80). Due to start calving April 15th 2022. These heifers were preg checked by a certified veterinarian.



Red Richmond Duchess

Apr 10/2020 SRD 96H 2176436

Red Six Mile Reckoning 178E

Red Bar 4A Timed Perfect 103Y

Red Bar 4A Duchess 11C

Red Aspen Duchess 70S

105	
SV	
BW	78
Age of Dam 5	
AWW 205 Wt 556	



Red Richmond Cappucino

May 19/2020 SRD 271H 2176448

Red Six Mile Reckoning 178E

Red Bar-E-L Anthem 46A

Red Richmond Cappucino SRD 104C

Red LLB Miss 36W

106	
PV	
BW	80
Age of Dam 5	
AWW 205 Wt 629	



107

Red Richmond Holly

Apr 11/2020 SRD 106H 2176440

PV	
BW	72
Age of Dam	
5	
AWW 205 Wt	
484	

Red Six Mile Reckoning 178E

Red Get-A-Long Wander 905

Red Piro Holly 552C

Red Piro Holly 0119X



108

Red Richmond Holly

Apr 12/2020 SRD 121H 2176442

PV	
BW	82
Age of Dam	
2	
AWW 205 Wt	
606	

Red Six Mile Reckoning 178E

Red Cockburn Cowboy Kind 635D

Red Richmond Holly SRD 2F

Red Piro Holly 552C



109

Red Richmond Delicacy

May 2/2020 SRD 233H 2176446

PV	
BW	80
Age of Dam	
4	
AWW 205 Wt	
638	

Red Six Mile Reckoning 178E

Red Bar-E-L Anthem 46A

Red Richmond Delicacy SRD 107D

Red Piro Brandina 3128A



This April/May calving herd is made up of true do-it-themselves Ranch Cows that calve on grass; calving ease and mothering ability are essential. With strict attention to consistency, fertility, longevity, calving ease, udders, feet and legs, we have reached a point where the herd quality has come together on all ends. We have developed a fabulous set of working ranch cows. These bred heifers were chosen out of our replacement pen and we feel they are just that! These heifers have been exposed to the same bulls that we used on our heifers. Due to calve this spring, we are very confident in the calving ease of our bulls and have high hopes for these females.



Vaccination Programs:
All our livestock are on the Express Verified Program as well as given Ivomec for parasite control.

Bred Heifers: in addition to the above, Express FP 5 VL5 May 10/20.
Scour Bos. 4 Jan 7/22 -
Scour Bos. 9 Feb 15/22



**Richmond Draft Pick
SRD 157G**

SS	
Homo Polled	
BW	70
AWW 205 Wt 607	

Richmond Draft Pick SRD 74D

Richmond Zodiac SRD 29Z
Richmond Elsa SRD 190E
Richmond Aurora SRD 166A



**RPY Paynes Red Man
1G**

SS	
Homo Polled	
BW	82
AWW 205 Wt N/A	

Cole Architect 08A
RPY Paynes Cracker 17E
EDW Beach Body

Anchor B "The Boss"
Anchor B Cassidy 10C
Anchor B Sheridan

The Limousin heifers were pasture exposed July 1st to August 18th to these bulls. Due to start calving April 15th 2022. These heifers were preg checked by a certified veterinarian.

SS	
Homo Polled	
BW	60
AWW 205 Wt 658	

**Richmond Hudson
SRD 28H**

Hunt Credentials 37C ET
Greenwood Emotion JSP 751E ET
Greenwood Wisteria Lane

Richmond Casualty SRD 149C
Hansen's Foxy Lady SEH 2F
Richmond Adorable SRD 54A



SS	
Homo Polled	
BW	85
AWW 205 Wt N/A	

**RPY Paynes Shogun
34H**

Hunt Testiment 40T
Hunt Credentials 37C ET
JKTW Whiskey River 985W

RPY Paynes Diesel 37D
RPY Paynes Fiona 17F ET
RPY Paynes Wallflower 46W



SS	
Homo Polled	
BW	80
AWW 205 Wt 558	

**Richmond Hash Tag
SRD 114H**

EDW Full Throttle

Nordal Trendsetter
Richmond Zinger SRD 116Z
Richmond SRD 206U





Richmond Duke SRD 66H

Apr 5/2020 93% CPF4105025

Richmond Grand Duke SRD 8D

Greenwood Pld Extra Charge
Murphy's 19Z
 Anders Slumber Party

110

Homo Polled	
SV	
BW	103
Age of Dam 8	
AWW 205 Wt 615	

SS

Richmond Hudson SRD 28H
 RPY Paynes Redman 1G



Richmond Heart SRD 203H

Apr 24/2020 94% CPF4105076

Richmond Grand Duke SRD 8D

Richmond Zodiac SRD 29Z
Richmond Cinnamon SRD 128C
 Richmond Rosemary SRD 140R

111

Hetero Polled	
SV	
BW	80
Age of Dam 5	
AWW 205 Wt 632	

SS

RPY Paynes Shogun 34H



Richmond Hazel SRD 189H

Apr 22/2020 95% CPF4105072

Richmond Emerald SRD 186E

Richmond Zodiac SRD 29Z
Richmond Fallon SRD 238F
 Richmond Wishbone SRD 69W

112

Homo Polled	
PV	
BW	70
Age of Dam 2	
AWW 205 Wt 561	

SS

Richmond Hudson SRD 28H

113**NEM Hermine 48H**

Mar 29/2020 96% CPF4104930

Richmond Doc Holiday SRD 101D

Richmond Ace TSR 39A

Ken-Doc Elsie

Ken-Doc Penny

Homo
Polled

PV

BW 77

Age of Dam
3AWW 205 Wt
600**SS**

Richmond Hashtag SRD 114H

114**Richmond Hot Stuff SRD 234H**

May 3/2020 95% CPF4105085

Richmond Emerald SRD 186E

Richmond Chance SRD 172C

Richmond Eye Shadow SRD 254E

Richmond Carly SRD 29C

Homo
Polled

PV

BW 80

Age of Dam
3AWW 205 Wt
557**SS**

RPY Paynes Shogun 34H

115**Richmond Emerald SRD 123H**

Apr 13/2020 96% CPF4104980

Richmond Emerald SRD 186E

Richmond Grand Duke SRD 8D

Richmond Fancy SRD 18F

Richmond Xpected SRD 7X

Hetero
Polled

PV

BW 90

Age of Dam
2AWW 205 Wt
613**SS**

Richmond Hudson SRD 28H



Richmond Hensley SRD 160H

Apr 18/2020 94% CPF4105064

EDW Full Throttle

Richmond Draft Pick SRD 74D
Richmond First Class SRD 213F
 Richmond Miss Adelle SRD 89D

116

Hetero
Polled

SV

BW 75

Age of Dam
2

AWW 205 Wt
562

SS

Richmond Hudson SRD 28H



Richmond HotStreak SRD 231H

May 2/2020 94% CPF4105084

Richmond Zodiac SRD 29Z

Richmond X-Celler SRD 137X
Richmond CountryStar SRD 228C
 Richmond Yoga SRD 140Y

117

Hetero
Polled

SV

BW 80

Age of Dam
5

AWW 205 Wt
629

SS

Richmond Hashtag SRD 114H



Richmond Heat Wave SRD 50H

Apr 1/2020 95% CPF4105028

Richmond Emerald SRD 186E

Lakeroad Belvin
Richmond Felina SRD 183F
 Richmond Brandi SRD 194B

118

Homo
Polled

PV

BW 75

Age of Dam
2

AWW 205 Wt
575

SS

Richmond Hudson SRD 28H

119

Richmond Hottie SRD 134H

Apr 17/2020 71% CXF4105052

Homo Polled	
SV	
BW	90
Age of Dam 3	
AWW 205 Wt 594	

Lakeroad Belvin

Red Bar-E-L Anthem 46A
Richmond Ever So SRD 248E
Richmond Yoselin SRD 65Y



SS

Richmond Draft Pick SRD 157G

120

Richmond Hestia SRD 115H

Apr 11/2020 94% CPF4105049

Homo Polled	
PV	
BW	87
Age of Dam 3	
AWW 205 Wt 595	

EDW Full Throttle

Richmond Zodiac SRD 29Z
Richmond Ever Clear SRD 136E
Richmond Zada SRD 43Z



SS

Richmond Hudson SRD 28H

121

Commercial Bred Females

A) 4 Blacks B) 4 Reds C) 4 Dark Reds

SS Pasture exposed to same bulls as purebred heifers.



Webster Farms



The Webster Family

Dave & Tammy

Cell - 403-740-5177

Home - 403-876-2778

Dan & Andrea

Cell - 403 740 6696

Home - 403-876-2064

We encourage you to call and visit about our heifers or stop in and we'd love to tour you through them.

Ever since we delivered the first bull out to the pasture years ago, we have been impressed with the quality in the cow herd, attention to detail and high expectations that they put on selecting their herd bulls. Running a one-iron angus cow herd, this is a program that doesn't leave anything out. We have always taken note of the incredible run of steers they sell in the fall at the Stettler Auction Mart. It was no surprise to us when we went to tour and select the heifers for our sale that we would find the quality of females that we were hoping for. We are very honoured to have this set of Angus heifers at our bull sale. Do not miss this opportunity to add these replacement heifers into your herd. We have seen the cows behind these females and you will not be disappointed with the future these heifers hold.

122 30 - 40 Open Commercial Angus Heifers

- a** 5 Black Open Heifers
- b** 5 Black Open Heifers
- c** 5 Black Open Heifers
- d** 5 Black Open Heifers
- e** 5 Black Open Heifers
- f** 5 Black Open Heifers
- g** 5 Black Open Heifers
- h** 5 Black Open Heifers

~ 30-40 commercial Black Angus heifers.

~ Avg. weight 725-750 lbs as of Jan 15, 2021. On a corn silage, roughage, and a 3-4 lb grain ration.

~ Birth dates range from Mar 10 to May 10, 2021.

~ Whole herd health plan - 7 way somnugen and parasitic control at branding, with booster 7 way, bovisheild one shot, Draxxin, and parasitic control at weaning Nov 2021.



~ These heifers will sell in their groups of 5. The highest bidder has first choice on which group of 5, with the option to take multiple groups.

~ Please discuss arrangements for delivery prior to purchase. Payment due prior to release of animals.



TERMS & CONDITIONS

Guarantee: Every lot is sold fully guaranteed. Every bull will be semen tested. We produce a quality product; therefore, we stand behind that product 100%. All bulls will sell under the normal breeder guarantee recommended by the Canadian Limousin Association and the Canadian Angus Association – printed on the back of your receipt. Richmond Ranch is never responsible for more than the value of the sale price of the bull(s) or female(s).

Terms of the Sale: Cash or cheque at par, payable to Richmond Ranch LTD at the clerks' desk Sale Day. U.S. funds will be accepted at current rate of exchange. No release will be given until settlement has been made. Please talk to us prior to the sale to make further arrangements. Should any purchaser fail to settle for their purchase; Richmond Ranch reserves the right to resell the animal to their best advantage either publicly or privately, without further notice.

Disputes: In the case of any disputes, the Auctioneer will open the bid between the parties involved. If no further bid is made, the buyer will be the person from whom the auctioneer accepted the last bid. The auctioneer's decision in such matters will be final.

Announcements: Any announcements from the auction block will take precedence over the printed matter in the catalogue. Buyers are therefore cautioned to pay attention to any such announcements.

Breeding Protection Plan: Ownership to the purchaser commences when the Auctioneer's hammer falls. Each animal becomes the risk of the purchaser as soon as sold. Livestock Breeding Protection Plan will be available by adding 10% to your invoice at the clerk's desk.

Accidents: Those who attend the Sale do so at their own risk. Neither Richmond Ranch, sales staff, or the auctioneer assumes any responsibility in the matter, and disclaims any legal or otherwise in the event of an injury, accident, or loss of or damage to property or person.

Delivery Options: We encourage you to discuss arrangements prior to the sale. Bulls will be delivered free of charge to central points in Western Canada (Alberta & Saskatchewan) at Richmond Ranch's convenience and at owner's risk. For cattle going to Eastern Canada or the US, we will arrange trucking at minimal cost to the buyer. If this delivery time is not convenient for the buyer, the bull(s) or female(s) will be kept free of charge and the buyer can pick-up the bull(s) at their convenience. Richmond Ranch recommends that all bulls left on site are to be enrolled in the Breeding Protection Plan or Insured.

Transfer of Paper: The registration papers will be transferred to the new owner upon receiving payment in full.

Semen Collection: Richmond Ranch reserves the right to collect in-herd use semen on any bull in the sale. This will occur at the expense of Richmond Ranch and at the buyer's convenience.

Sight Unseen Purchase Plan: If you are unable to attend sale day, we would be more than happy to assist you in your sale selection. Please feel free to contact any member of the Richmond Family or any of the sales staff. Every effort will be made to get you the right bull or bulls, at the right price to make you a repeat customer.

Homozygous Polled Testing was completed at NeoGen. Richmond Ranch does not guarantee the results. **EPD's** are available upon request. They can be found on each respective breed association website.

By attending the Richmond Ranch Bull & Female Sale, you are granting permission for your picture to be used for promotional and advertising purposes related solely to the Richmond Ranch Bull & Female Sale.

Return Undeliverable
Canadian Addresses To:

Richmond Ranch Ltd.
P.O Box 58
Rumsey, AB
TOJ 2Y0



FRIDAY MARCH 11, 2022
1:00 PM AT THE RANCH, RUMSEY AB

WHERE QUALITY ISN'T A GOAL, IT'S A STANDARD

WWW.RICHMONDRANCH.COM

